

Tiel DC Quartz A3

Logistic Park Glassworks



WAREHOUSE FOR RENT ↗ WAREHOUSE FOR RENT ↗ WAREHOUSE FOR RENT ↗

GROWTH ↗ SPACE FOR GROWTH ↗



| | |
|-------------|-----------------------|
| Warehouse | 18,938 m ² |
| Offices | 66 m ² |
| Mezzanine | 1,807 m ² |
| Car parking | 80 |

AVAILABLE NOW ↗

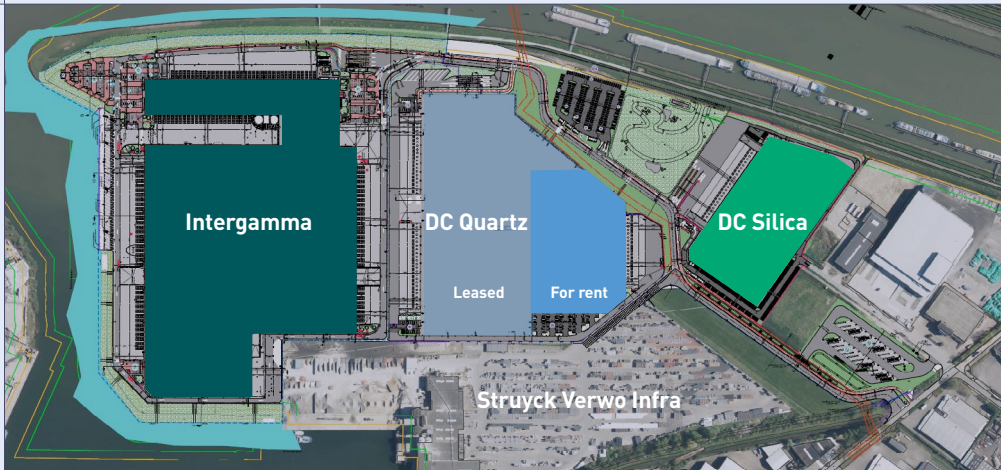
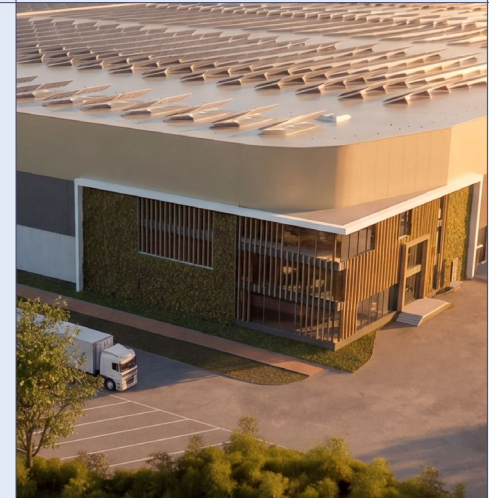


High-end, sustainable development

DC Quartz

Logistic Park Glassworks, the sustainable transformation of an old glass factory on brownfield land to a state-of-the-art development of the future. The new development will be delivered according to BREEAM Excellent standards.

To optimise the available space on the plot buildings have a **clear height of 15,20 m**, and **free stacking height of 14,90 m**.



Logistic Park Glassworks UPS's:

- High environmental category: 5.3.
- Available power grid connection of 15 megawatts.
- Power generation through solar panels of approximately 15 megawatts of green energy.
- Ambition to build an electrical truck charging station, with extensive facilities for drivers.

Delivery specifications A3

Warehouse

- **BREEAM Excellent**
- Warehouse: **approx. 18,938 m²**
- Mezzanine: **approx. 1,807 m²**
- Clear height: **15,20m**
- Free stacking height: **14,90 m**
- Column structure: **22,60 m x 11,30 m**
- Possibility to place solar panels
- Floor load capacity: **60 kN/m²**
- **Floor: Nen 2747 class 1, super-flat floors**
- Mechanical dock levelers, **2,000 mm x 2,800 mm**, electro-hydraulically operated. **Static capacity 100 kN, dynamic capacity 60 kN.**
- **LED lighting**
- **Certified ESFR sprinkler system**





Office

- Office space: **approx. 66 m²**
- Designed as an **open-plan office**, the office space can be adjusted upon request
- **Pantry** available on each floor
- LED lighting
- Restrooms on each floor
- Heat pump
- Terrace



Due to the lower construction density/plot ratio, there is more outdoor space and room for greenery, which will contribute to the overall employee experience. Wadi's will be used for the collection and infiltration of rain on paved surfaces.

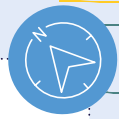


Why Logistic Park Glassworks?

- Redevelopment of a brownfield location, demonstrating **sustainable use of land**
- **An excellent plot** for delevopment
- **Building permits have been granted**
- **No nitrogen emissions issues, the nature permit has been granted**
- Tiel has a **central location** and a strategic position **along the A15 highway**
- **BREEAM Excellent**
- Grid power connection of **15 Megawatts**
- Power generation of approximately **15 Megawatts of green energy**
- **A charging station for electrical trucks**
- High environmental category: **5.3**
- Buildings have a **clear height of 15,20 m**
- Sufficient supply of logistics personnel within the region



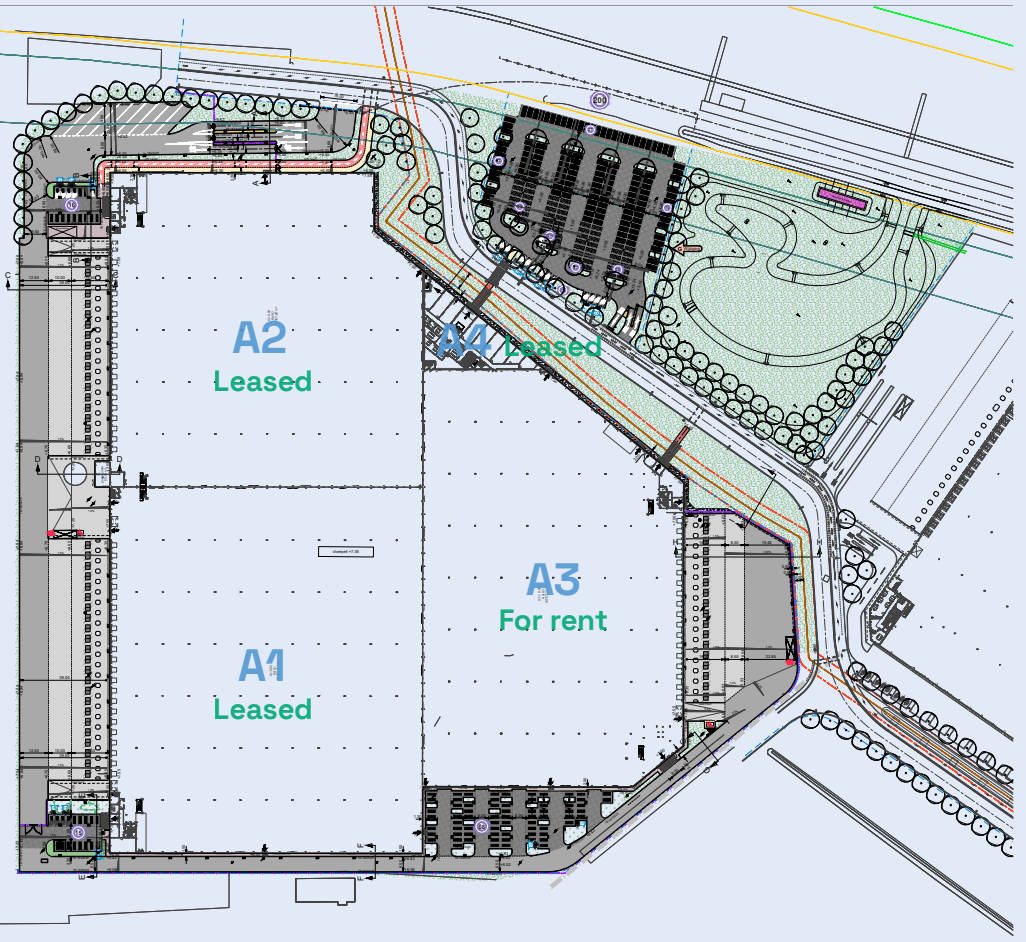




DC Quartz

A3

| | |
|---------------------|-----------------------|
| Warehouse | 18,938 m ² |
| Mezzanine | 1,807 m ² |
| Office | 66 m ² |
| Car parkingspots | 80 |





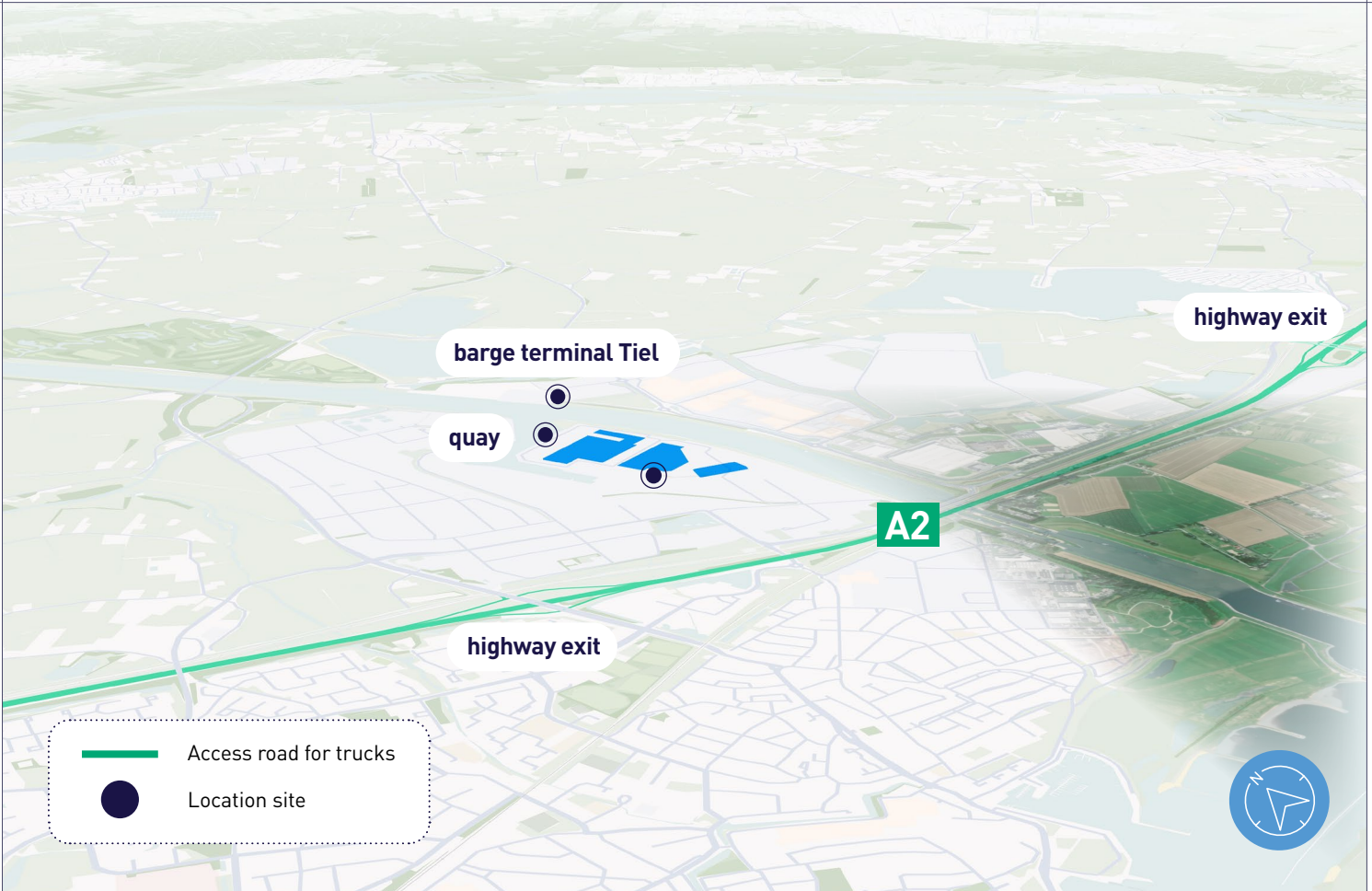
Location

Tiel is a city situated **in the heart of the Netherlands**. It is considered one of the key logistical hubs in the country due to its advantageous position.

Tiel is located less than 2 km from the A15 junction, a key highway essential for both domestic and international transport, connecting the port of Rotterdam to the German Ruhr area. The A15 also links Rotterdam and Arnhem, and the city is only **a 5-minute drive from the A2 intersection**, which connects Amsterdam, Utrecht, Den Bosch, Eindhoven, and Maastricht.

The river Waal and the Amsterdam-Rhine Canal enhance connectivity with a barge terminal making the river Waal a multimodal transport hub. Tiel serves as a base for prominent logistics providers such as DHL, LIDL, and Kuehne Nagel.





barge terminal Tiel

highway exit

quay

A2

highway exit

— Access road for trucks

● Location site





A sustainable site



PV Installation

Montea adds PV installations to its logistics properties to generate local green energy and reduce CO₂ emissions. **Tenants can buy this energy at a discounted rate.**



Ventilation — Office

Air is circulated through grilles, with blower quantities calculated for **optimal thermal comfort**. For **areas with variable occupancy, demand-controlled ventilation** adjusts airflow based on CO₂ levels. The air handling unit also recovers heat and moisture.



Energy monitoring

The warehouse features an energy monitoring system that allows customers and Montea to **track daily energy usage and make necessary adjustments**, quickly identifying and correcting any deviations.



Rainwater

Rainwater will be collected with a **buffer capacity of**

200 m³





Biodiversity

A **flower meadow** around the building will promote **biodiversity** and gives an enjoyable work environment.



Charging facilities

Charging stations (22kW) for electric vehicles will be provided. Also the bicycle storage will have the necessary facilities for **electric bicycles**.



Lighting

Smart led lighting with **motion detection**.



Heating & hygiene ventilation — warehouse

To maximize energy efficiency and indoor comfort, we opt for **air handling units with roof-mounted heat pumps** instead of a separate gas-fired heater and ventilation system. This integrated solution offers superior energy recovery, ensures optimal distribution of conditioned air, and provides free cooling options. Both heat and moisture can be efficiently recovered, improving both comfort and sustainability.



Materials

Montea reassess its choice of materials continuously and will look for **innovative and circular materials** that can be easily repaired, dismantled, reused or recycled without any major impact on the environment.



IS THIS YOUR NEW SPACE FOR GROWTH ↗



Contact our Business Developer Netherlands



Patrick van Raalte

patrick.vanraalte@montea.com

+31 6 23 24 56 57

or visit montea.com

SPACE FOR GROWTH ↗ SPACE FOR GROWTH ↗ SPACE FOR GROWTH ↗ SPA

The Netherlands 🇳🇱

Entrada
Ellen Pankhurststraat 1c
NL-5032 MD Tilburg
Tel.: +31 88 20 53 888

Belgium 🇧🇪

Industriezone III Zuid
Industrielaan 27 bus 6
BE-9320 Erembodegem
Tel.: +32 53 82 62 62

Germany 🇩🇪

Mindspace (office 506)
Neue Mainzer Straße 66-68
60311 Frankfurt am Main
Tel.: +49 151 424 638 11

France 🇫🇷

48 Avenue Victor Hugo
75016 Paris
Tel.: +33 1 83 92 25 00

All information provided by us is without any obligation and only meant for the addressee. All information is assembled with care and in our opinion issued from a reliable source. According to the correctness we cannot, however, accept liability.