



Automation Systems



Unlock the power of efficiency with CubeBOX™

Streamline your workflow and maximize productivity with Tezmaksan Robot Technologies' cutting-edge CNC automation solution. Ready for the future? Contact Tezmaksan today.

Your productivity redefined and revolutionized

The **CubeBOX™** system from Tezmaksan Robot Technologies offers seamless integration and maximum flexibility.

Compatible with all CNC machines, its cost-effectiveness, quick commissioning, and easy part exchange allows you to enjoy advanced automation without hefty investments. Automation is for everyone. Take your CNC automation to new heights and give our expert team a call today.

Collaborative Robots can also be adapted to all our **CubeBOX™** systems.





TEZMAKSAN
ROBOT TECHNOLOGIES

CubeBOXTM Blues DR

Thanks to our innovative, compact robot cell **CubeBOXTM** system, such that up to 3 CNC machines can be operated without downtime during loading and unloading the workpieces, from the new or existing machine(s) without any brand restriction.

Tezmaksan **CubeBOXTM** system gives you the flexibility to quickly respond to your clients. We enable you to profitably run small and medium-sized batches with quick set-up times.

CubeBOXTM Blues Models:

BLUES DR - Drawer Type

BLUES MINI - Drawer Type with Narrow Body Construction

BLUES MAX - Drawer Type with Wide Body Construction

- › Automation of all CNC machines (lathes, grinding and milling machines etc.) and presses as well
- › Loading through the front or side door of the CNC machine
- › Suitable for any brand of CNC machine
- › 6-axis robot with a wide range of loads
- › 7-axis robot with slider system
- › Multiple production series in one production run
- › Many different gripper options
- › Standard 5 to 8 robust product drawers
- › Refilling of workpieces during operation
- › Variable product heights due to a widely variable drawer system

Blues DR

- 1 6 Axis industrial robot
- 2 Industrial PC with RoboCAM
- 3 Teach pendant
- 4 Gripper and finger set
- 5 Drawer + inlay
- 6 Area sensor/scanner



CubeBOXTM Blues

CubeBOXTM Blues system gives you the flexibility to quickly respond to your clients. We enable you to profitably run small and medium - sized batches with quick set-up times.



DR STANDARD

- > 6 Axis robot 12 kg. / 25 kg. payload
- > 5-8 Drawers with 800mm x 600mm size each
- > Suitable for tending up to 2 CNC machines
- > **RoboCAM** smart automation software
- > Easy and quick set-up



DR MINI



- > 6 Axis robot 7 kg. / 12 kg. payload
- > 5-8 Drawers with 600mm x 400mm size each
- > Suitable for tending 1 CNC machine
- > **RoboCAM** smart automation software
- > Easy and quick set-up



DR MAX



- > 6 Axis robot 25 kg. and above
- > 5-8 Drawers with 1200mm x 600mm size each
- > Suitable for tending up to 3 CNC machines
- > **RoboCAM** smart automation software
- > Easy and quick set-up



CubeBOXTM Blues Space Cabinet

- › Uninterrupted operation of the system during loading the workpieces onto the stocking area
- › Adjustable sliding door
- › Standard 5 Drawers With of 400 x 600mm
- › Tending one machine
- › Portable system
- › Compatible With 7 kg / 10 kg and 14 kg 6 axis robot
- › Manual SPC station
- › PC Touch panel



Space Cabinet

- 1 3 Position drawer + inlay
- 2 Light barrier / curtain
- 3 Adjustable sliding door
- 4 6 Axis Industrial Robot
- 5 Manual SPC station
- 6 Industrial PC with RoboCAM
- 7 Teach pendant
- 8 Robot controller

Space Cabinet
Youtube Video

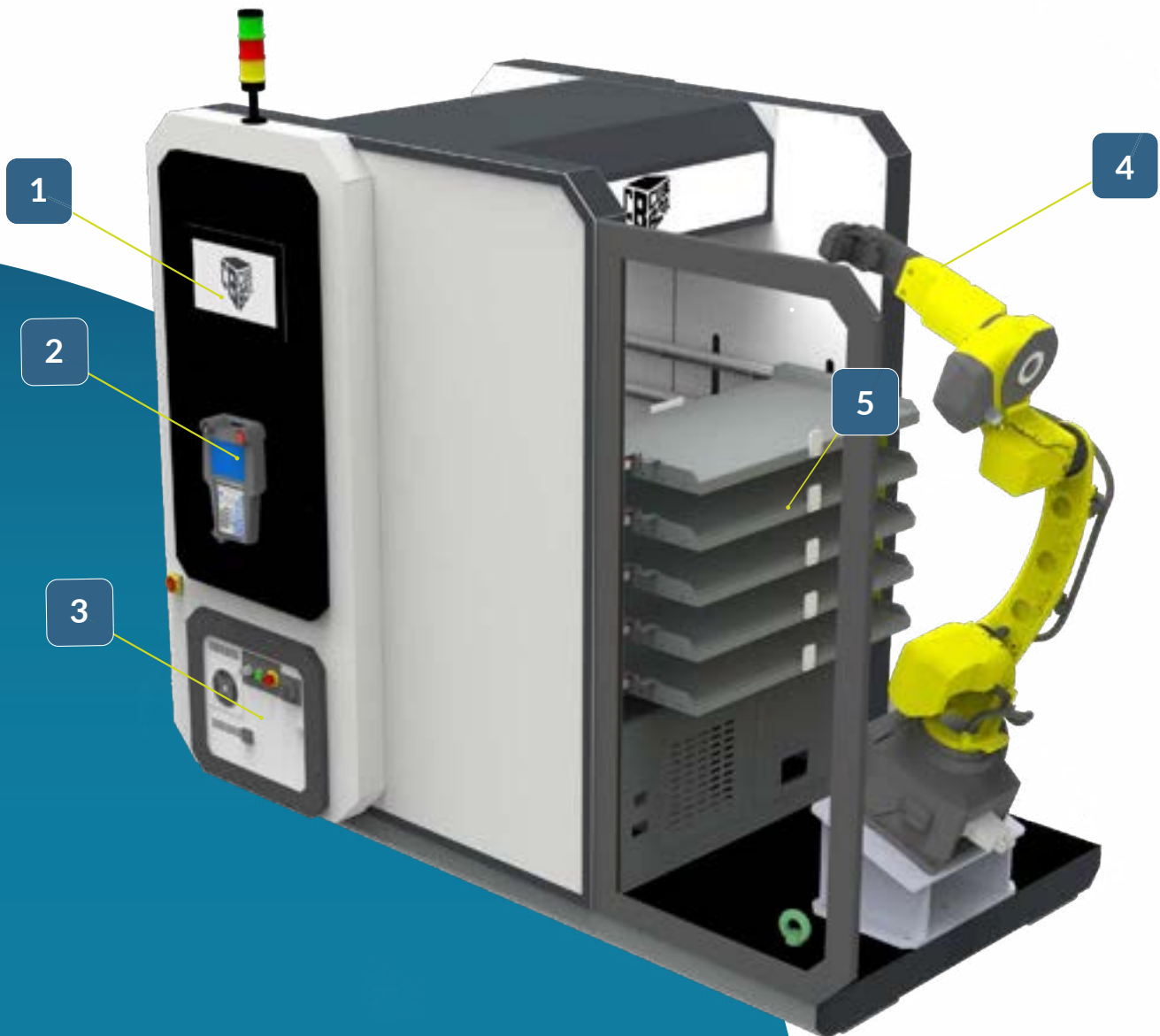


CubeBOXTM Blues

DR-3P

> Uninterrupted operation of the system during loading the workpieces onto the stocking area.

- 1 Industrial PC with RoboCAM
- 2 Teach pendant
- 3 Robot controller
- 4 6 Axis industrial robot
- 5 3 Position drawer + inlay



- > Compatible With 12 kg / 25 kg and 35 kg 6 axis robot
- > 5-7 Drawers with 900mm x 500mm size each
- > Suitable for tending up to 2 CNC Machines
- > **RoboCAM** smart automation software
- > Easy and quick set-up

- 1 Operator load & unload position during operation**
- 2 Safety zone for operator and/or robot pull position**
- 3 Robot pick & place position**

CE



CubeBOXTM Blues

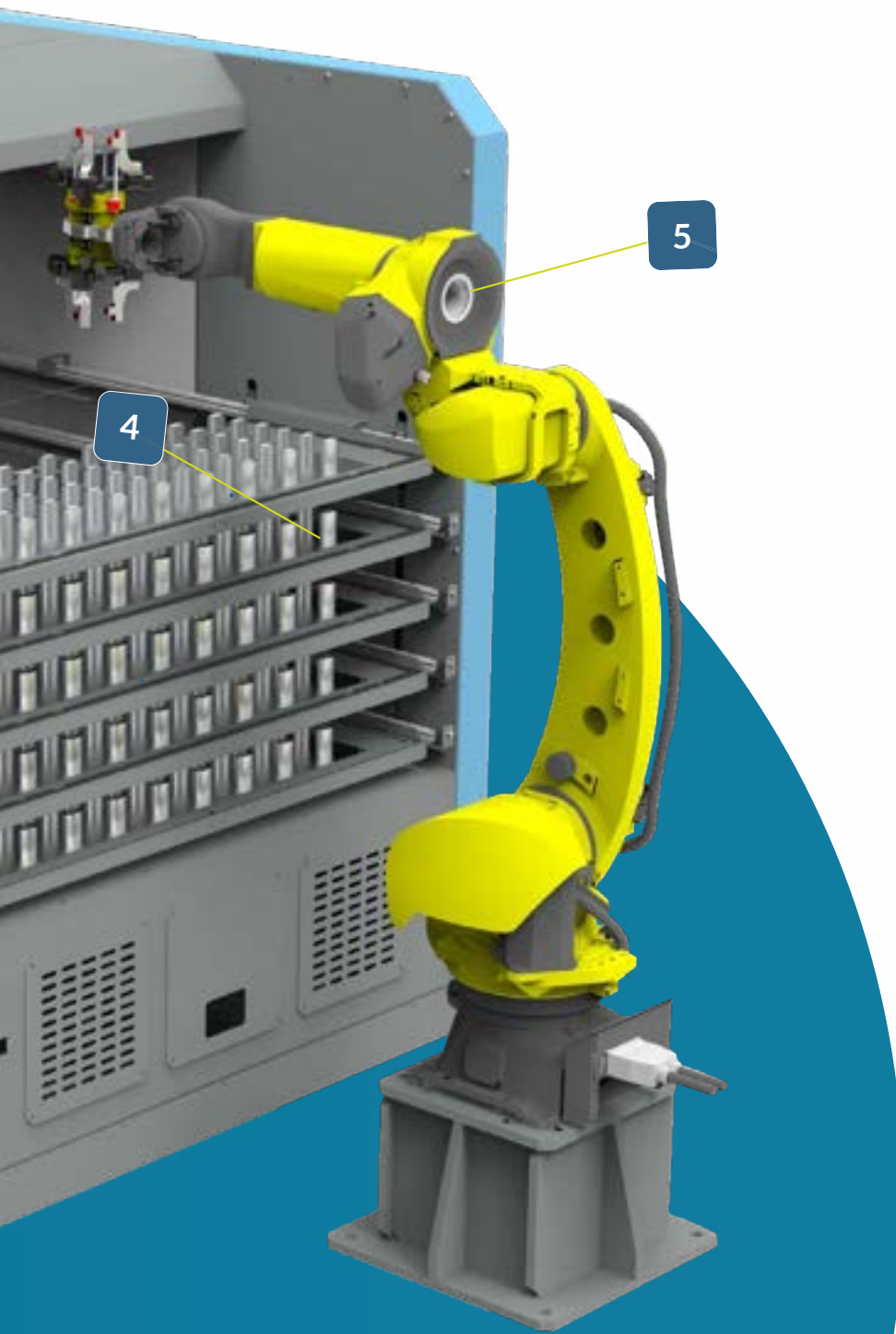
DR Max-3P

- 1 Industrial PC with RoboCAM
- 2 Teach pendant
- 3 Robot controller
- 4 3 Position drawer + inlay
- 5 6 Axis industrial robot



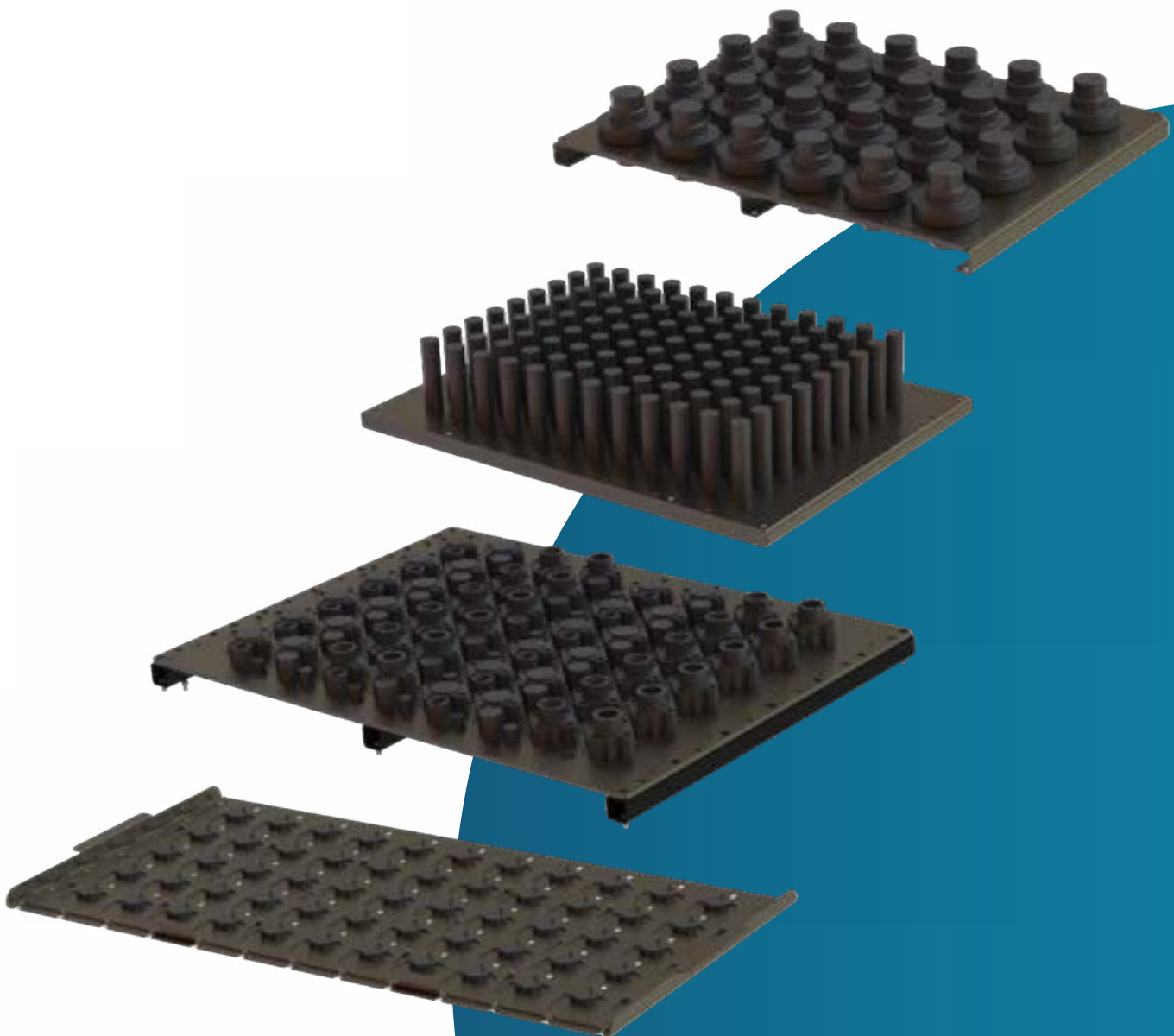
- › Compatible With 25 kg / 35 kg and above 6 axis robot
- › 5-7 Drawers with 1300mm x 500mm size each
- › Suitable for tending up to 3 CNC machines
- › **RoboCAM** smart automation software
- › Easy and quick set-up

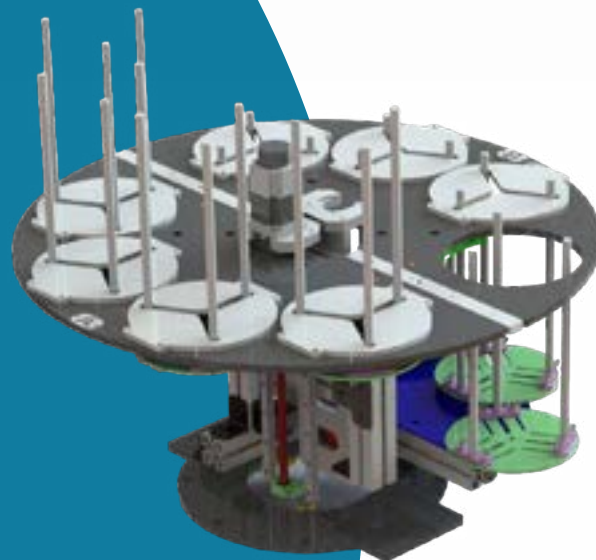
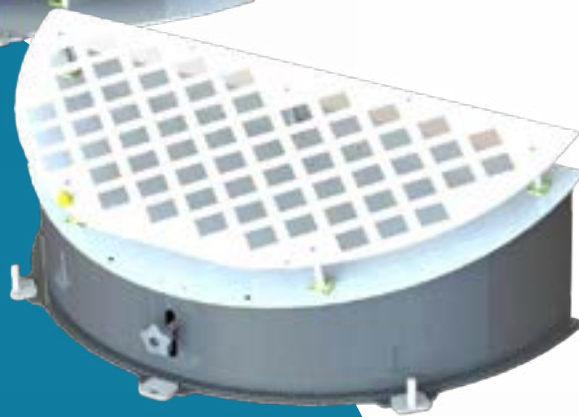
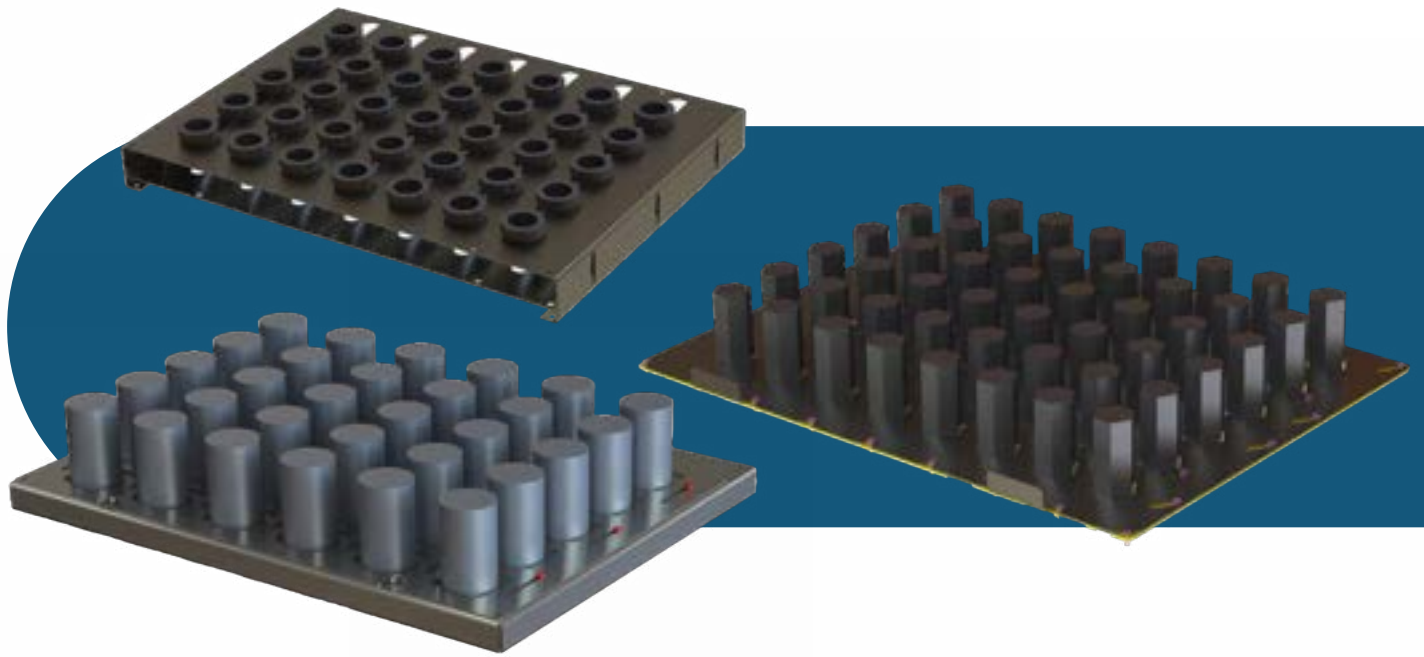
CE



Inlays

Tezmaksan's dynamic and talented engineering team is 24/7 available to support the needs of the customers. In our customer-specific, workpiece-specific design work, we always offer you solutions by prioritizing flexibility and the ability to automate diverse workpieces.





CubeBOXTM Blues RT

The **CubeBOXTM Blues RT** is a versatile system and can be used in a variety of industrial applications. It offers a wide range of features for workpiece feeding, high-precision processes and efficient production.

- It has a rotary table workpiece loading unit, which ensures a continuous workflow and increases productivity.
- Can be used as a feeding unit for lathes and vertical machining centres, ensuring accurate and timely feeding of workpieces.
- Fast and easy set-up time with **RoboCAM** software, facilitating quick configuration and start-up of processes.
- Offers adjustable stock area according to the workpiece diameter, allowing easy placement of workpieces of different sizes.
- Provides maximum efficiency with minimum space utilisation, saves space and enables more efficient use of the production area.
- Portable cell
- PC touch panel
- Easy and quick set-up
- **RoboCAM** smart automation software
- Suitable for tending up to 2 CNC machines

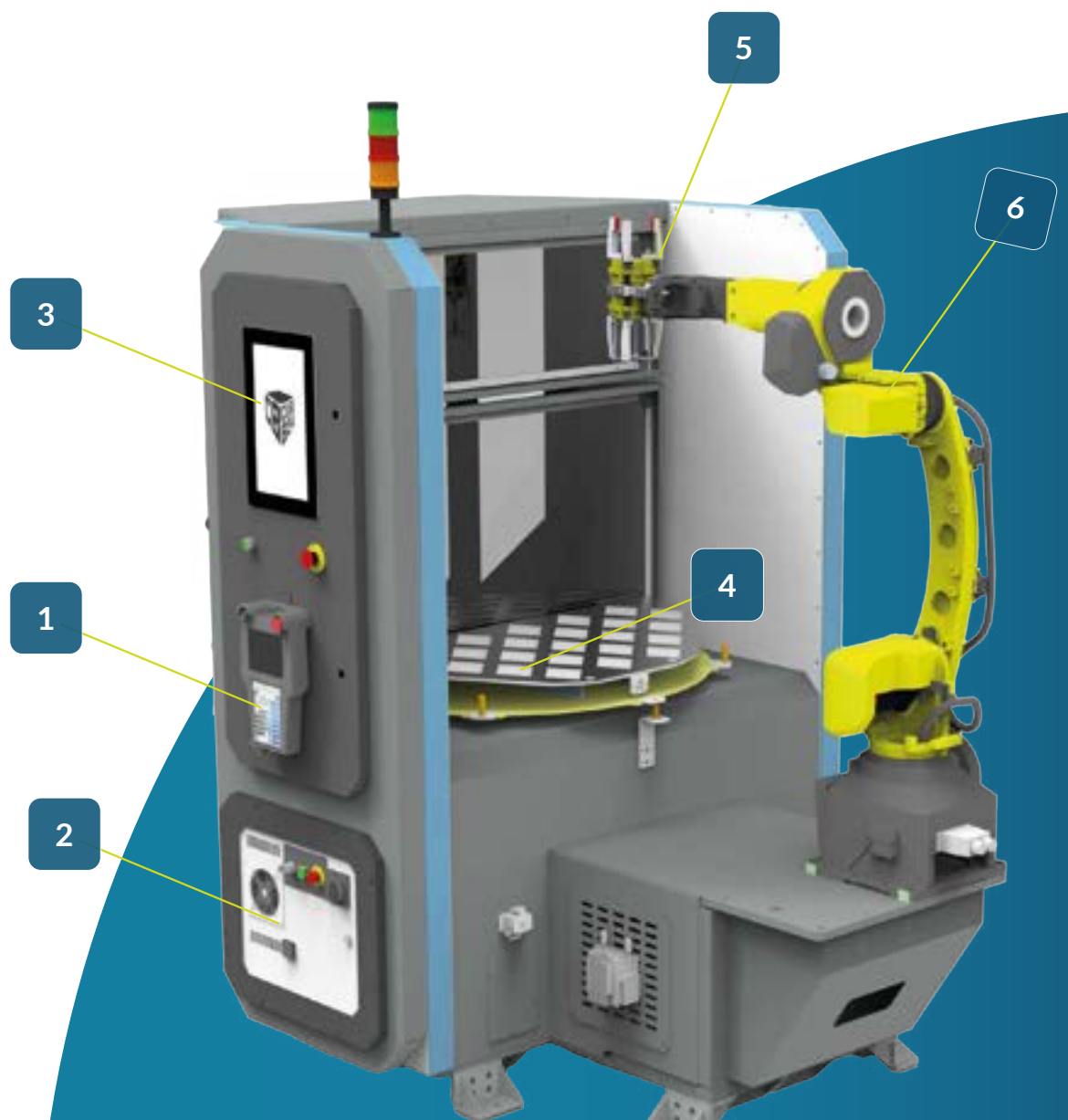


It has single machine and double machine loading and unloading capability, it can serve more than one machine and allows workpieces to switch quickly.

Compatible with robots with payload capacity of 12 kg, 25 kg and 35 kg, it can carry workpieces of different weights and perform operations.

Blues Rotary Table

- 1 Teach pendant
- 2 Robot controller
- 3 Industrial PC with RoboCAM
- 4 Rotary table
- 5 Gripper
- 6 6 Axis industrial robot

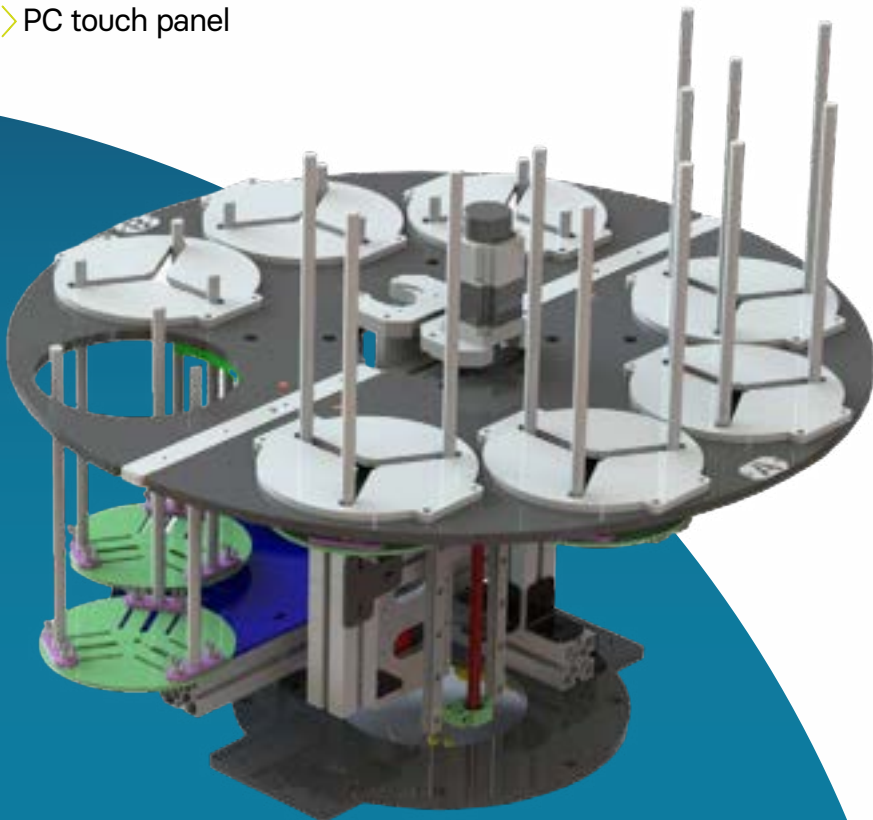


CubeBOXTM Blues RT-S

With the **CubeBOXTM Blues RT-S**



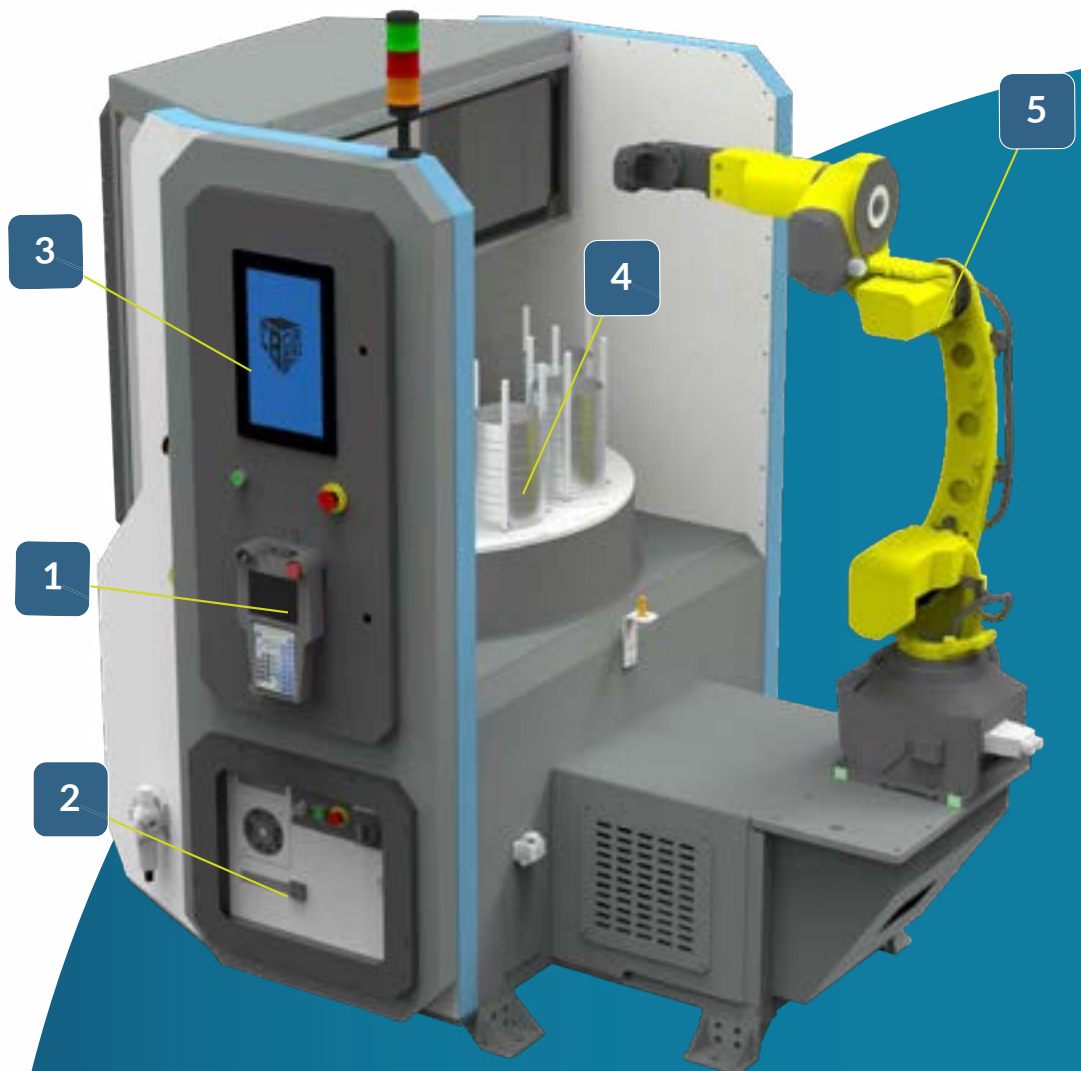
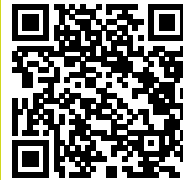
- › You can stack round parts on top of each other to create more stocking area
- › You can integrate long round bar parts into the automation system
- › With servo motors, it can control the spindle height according to the workpiece, ensuring that the workpiece is kept in the correct position and the processes are carried out with high precision.
- › Uninterrupted operation of the system during loading the workpieces onto the stocking/stacking area
- › Portable cell
- › Suitable for tending up to 2 CNC machines
- › **RoboCAM** smart automation software
- › Easy and quick set-up
- › PC touch panel



Blues RT-S

- 1 Teach pendant
- 2 Robot controller
- 3 Industrial PC with RoboCAM
- 4 Rotary table
- 5 6 Axis industrial robot

CubeBOX Blues
RT-S Youtube video



CubeBOXTM Blues RT-VISE

Grip the Future

Automated Vise Loading for Maximum Efficiency.

Universal Clamp Compatibility

RT VISE is designed to work seamlessly with various clamp types, offering unmatched versatility across different workpiece geometries and setups.

Ideal for Boutique and Custom Production

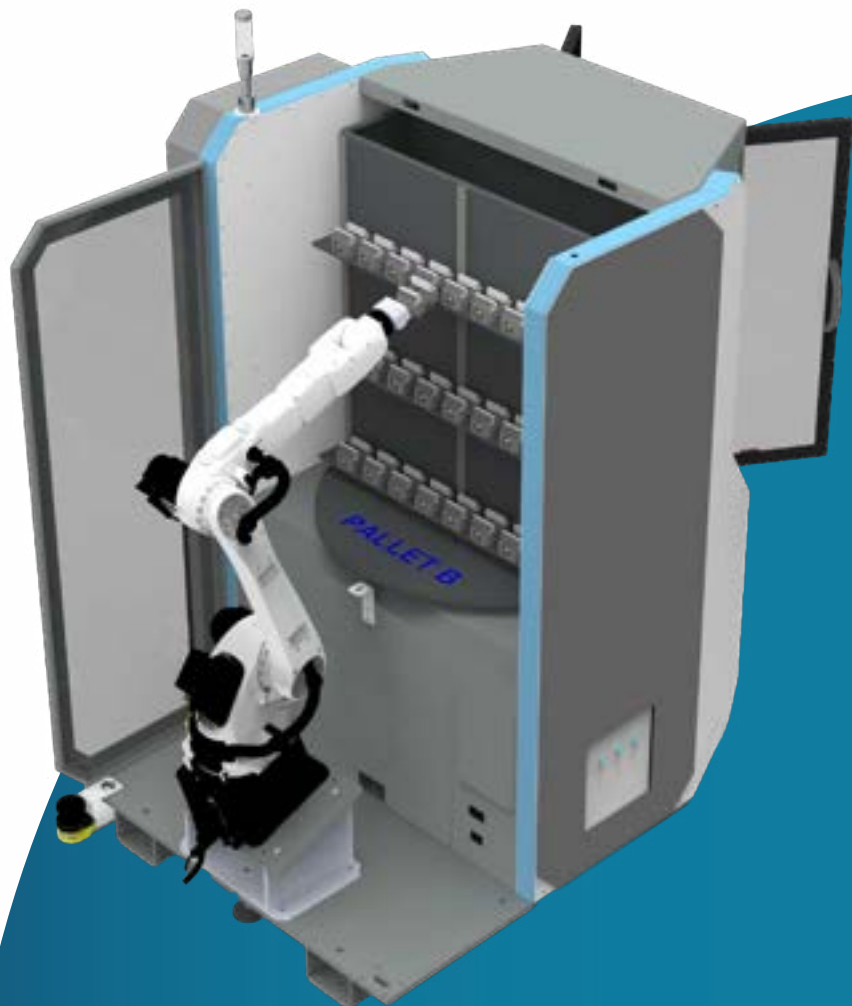
A flexible and modular solution tailored for boutique manufacturing, RT VISE adapts to low-volume, high-mix production environments with ease.

Enables Continuous and Uninterrupted Operation

Designed for efficiency, it supports continuous production, minimizing downtime and perfect for precision-focused workshops.

Compact Yet Flexible Automation Tool

Combining compactness with flexibility, RT VISE is a smart solution for small-scale manufacturers seeking to automate without compromising agility.



- > Suitable for tending up to 2 CNC machines
- > Designed for low-volume, high-mix production environments
- > Simple and smart RoboCAM automation software
- > Universal clamp compatibility
- > 6 axis industrial robot



Blues RT-VISE

- 1 Teach pendant
- 2 Robot controller
- 3 Industrial PC with RoboCAM
- 4 Rotary table



CubeBOXTM Soul

CubeBOXTM Soul is designed especially for casting industry where there are heavy casted and with different surface formed workpieces and mass production.



SOUL S

- > **RoboCAM** smart automation software
- > 11 pieces of Metal Tray (rack) 800mm. x 500 mm
- > Suitable for tending up to 2 CNC machines
- > Easy and quick set-up

CE



SOUL M



- > **RoboCAM** smart automation software
- > 11 pieces of Metal Tray (rack) 1000mm. x 600 mm
- > Suitable for tending up to 2 CNC machines
- > Easy and quick set-up

CE

SOUL L



- > **RoboCAM** smart automation software
- > 11 pieces of Metal Tray (rack) 1/2/3 Euro-pallet sized
- > Suitable for tending up to 3 CNC machines
- > Easy and quick set-up

CE

CubeBOXTM Soul

- 1 Adjustable sliding door with interlock
- 2 Trays - standard 11
- 3 6 Axis industrial robot
- 4 HDMI with RoboCAM
- 5 Light barrier / curtain

CE





3

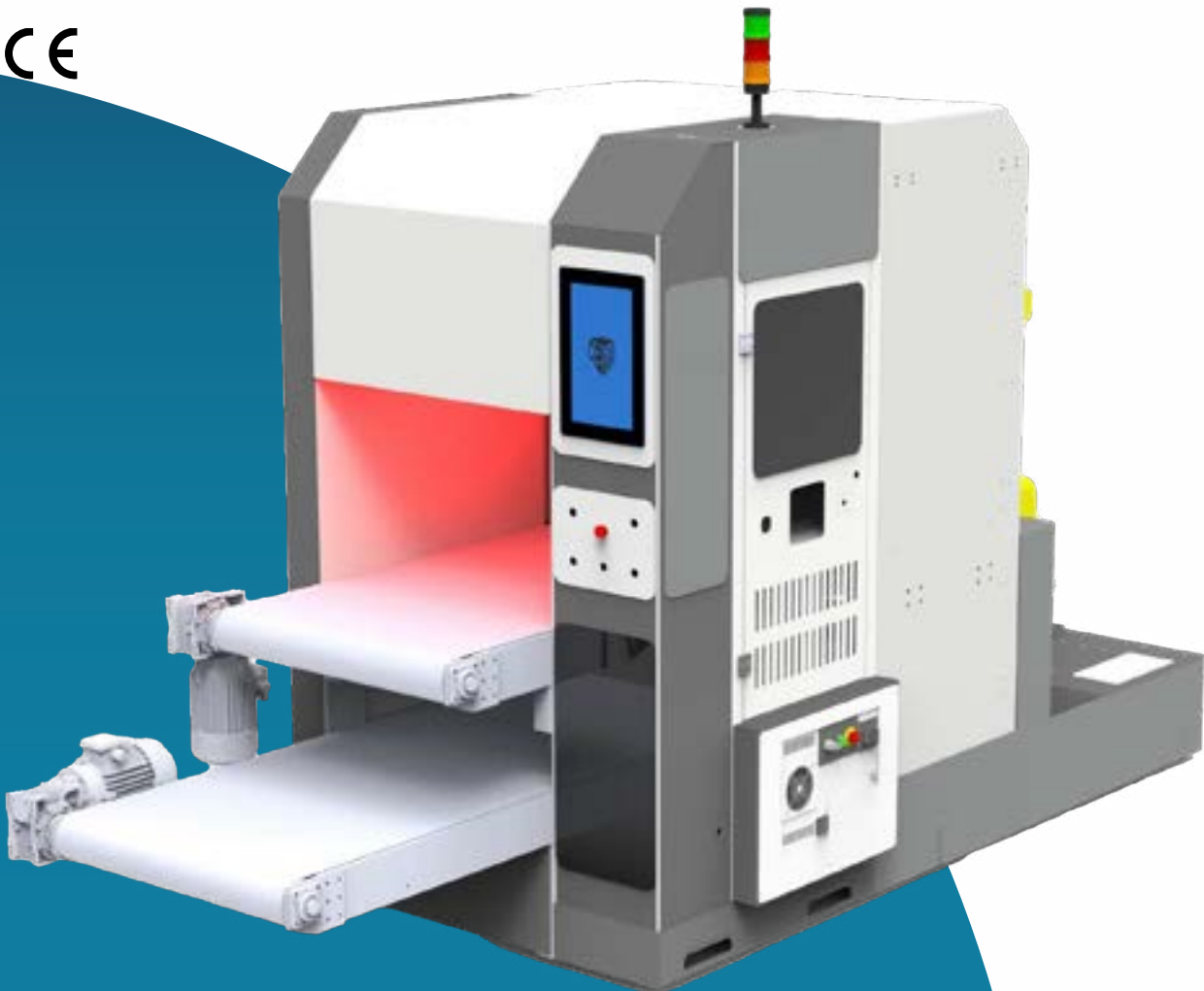
2

1

CubeBOXTM Vision

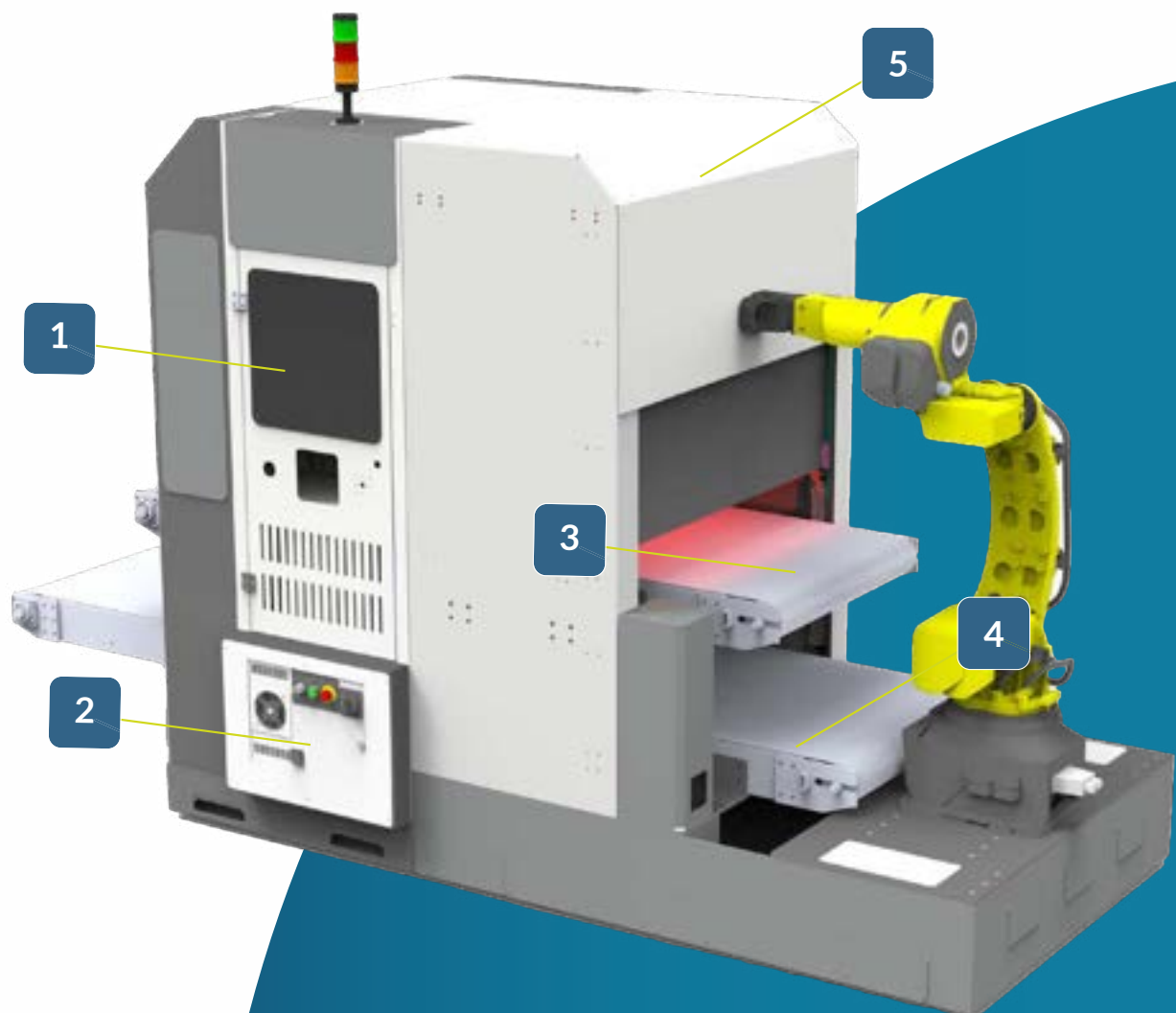
- › **RoboCAM** smart automation software
- › Easy and Quick set-up
- › suitable for tending up to 3 CNC
- › Industrial PC With RoboCAM
- › Designed for similar workpieces with wide range of dimensions.
- › 2D and 3D vision guided solutions with worldclass camera applications
- › Wide range of extra options:
 - › Presence inspection
 - › Quality inspection
 - › Positioning / alignment
 - › Dimension measurement

CE



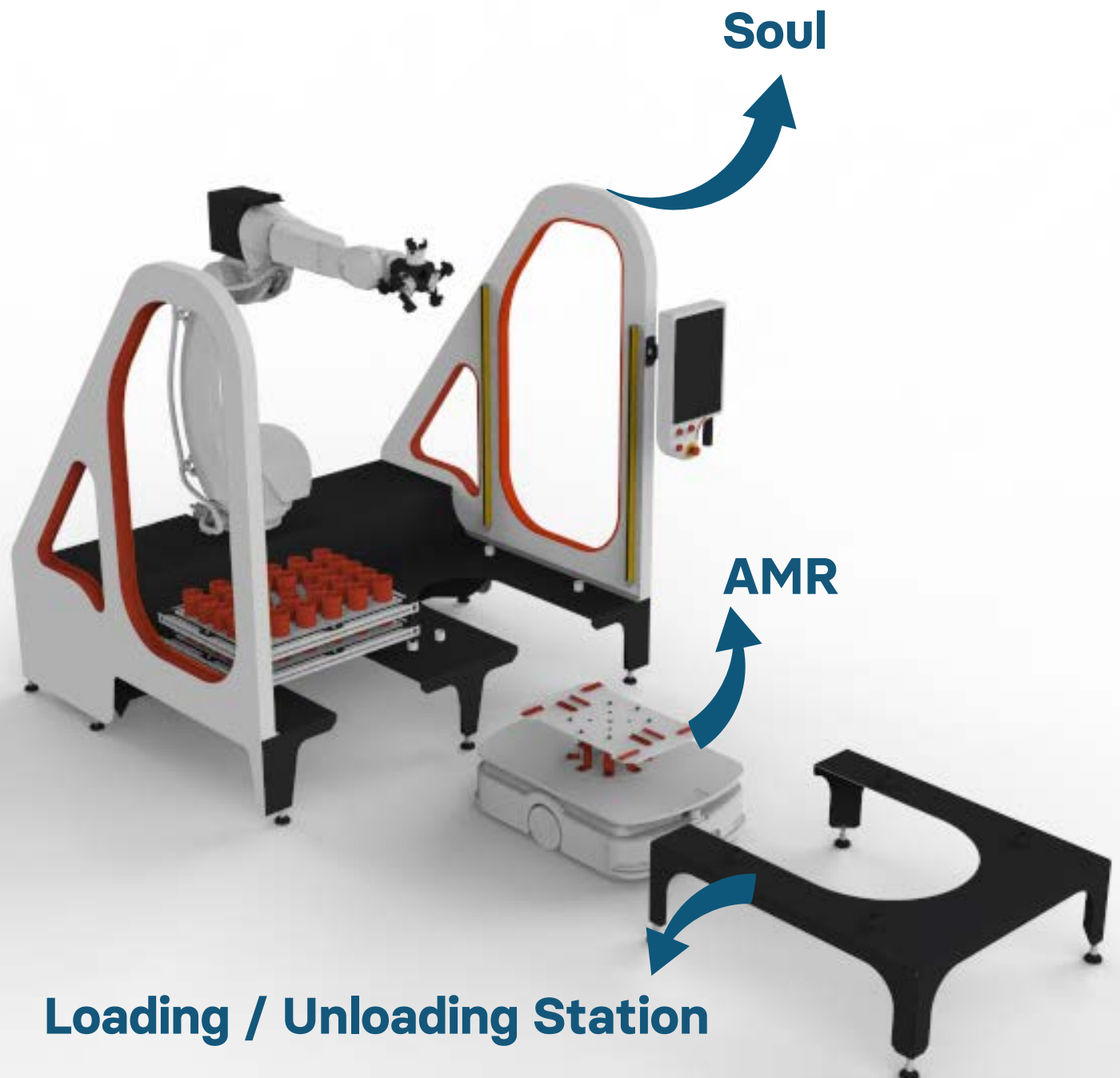
Vision

- 1 Industrial PC with RoboCAM
- 2 Robot controller
- 3 Feeding conveyor
- 4 Exit conveyor
- 5 Camera cabinet



CubeBOX™ SOUL- AMR

CubeBOX™ AMR SOUL is a smart and flexible automation solution designed to redefine your production processes. With its innovative modular structure, the system combines the “Soul” unit, a robotic arm, and a bidirectional AMR (Autonomous Mobile Robot) to manage workflows with maximum efficiency.

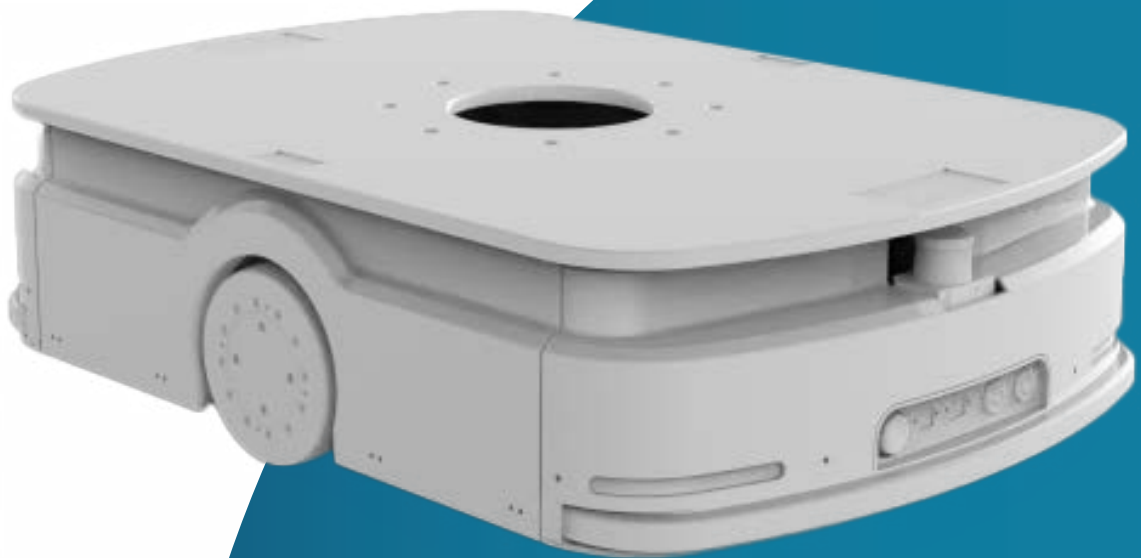


How It Works

- > The robotic arm automatically picks up raw materials from the left base unit and loads them into the CNC machine.
- > Once the CNC process is complete, the robot transfers the machined parts to the right base unit.
- > At this stage, the AMR comes into play, picking up the processed parts and transporting them to the next operation station or target location.

This entire process is carried out fully autonomously, ensuring a continuous, seamless, and error-free production cycle without the need for manual intervention.

CubeBOX™ AMR SOUL is an ideal solution for flexible production lines, small batch manufacturing, and efficiency-driven industrial applications. With its intelligent transport system, automated loading/unloading capabilities, and modular installation advantages, it brings the manufacturing technology of the future to your facility today.



CubeBOXTM Pallet Pool PT

CubeBOXTM Pallet Pool (also called as Pallet Tower and Pallet Changer) is an automation solution allowing one operator to run multiple jobs for faster changeover times. This option is used for automation cells with limited floor space making them an economic investment option to expand pallet storage and production on a single machining center.

The **CubeBOXTM Pallet Pool** Automation, which we present to you as a Compact and Expandable System, has a space-saving design, consist of the pallets arranged in a compact circle in front of the machine, and an industrial 6 axis robot that loads and unloads pallets in the middle of that circle.

It is an automatic operating system for small/medium scale production. It is the ideal solution for high productivity if you have high mix, low batch production.

The automated loading systems donated with a software for Flexible Manufacturing System "FMS", increase the productivity. They tend machines quickly and accurately and free up operators/engineers (employees) to perform more value-added business.

Our **flexible manufacturing system RoboCAM-FMS** philosophy encourages the use of is robotic automated systems for loading a set of machines.

Flexible manufacturing software, also known as flexible manufacturing systems (FMS) software, is designed by Tezmaksan software R&D team, to optimize and streamline manufacturing processes in environments where there is a need for versatility, adaptability, and rapid changeover.

Production Planning and Scheduling, Resource Allocation, Inventory Management, Quality Control, Real-Time Monitoring and Reporting, Changeover Management, Scalability and Customization are some of the features and functionalities typically found in our flexible manufacturing software.

PALLET POOL
Youtube Video



Pallet Pool PT-24

- > Compatible with 25 kg and 35 kg and above 6 axis robot
- > 24/7 Non-stop production
- > One pallet station for loading
- > **RoboCAM-FMS** software
- > 16 + no. of Tool Changer
- > 24 no. of Pallet
- > Developed for single and/or multiple CNC machine(s)
- > Optional specifications (barcode reader, BUS communication etc.)



Pallet Pool PT-18

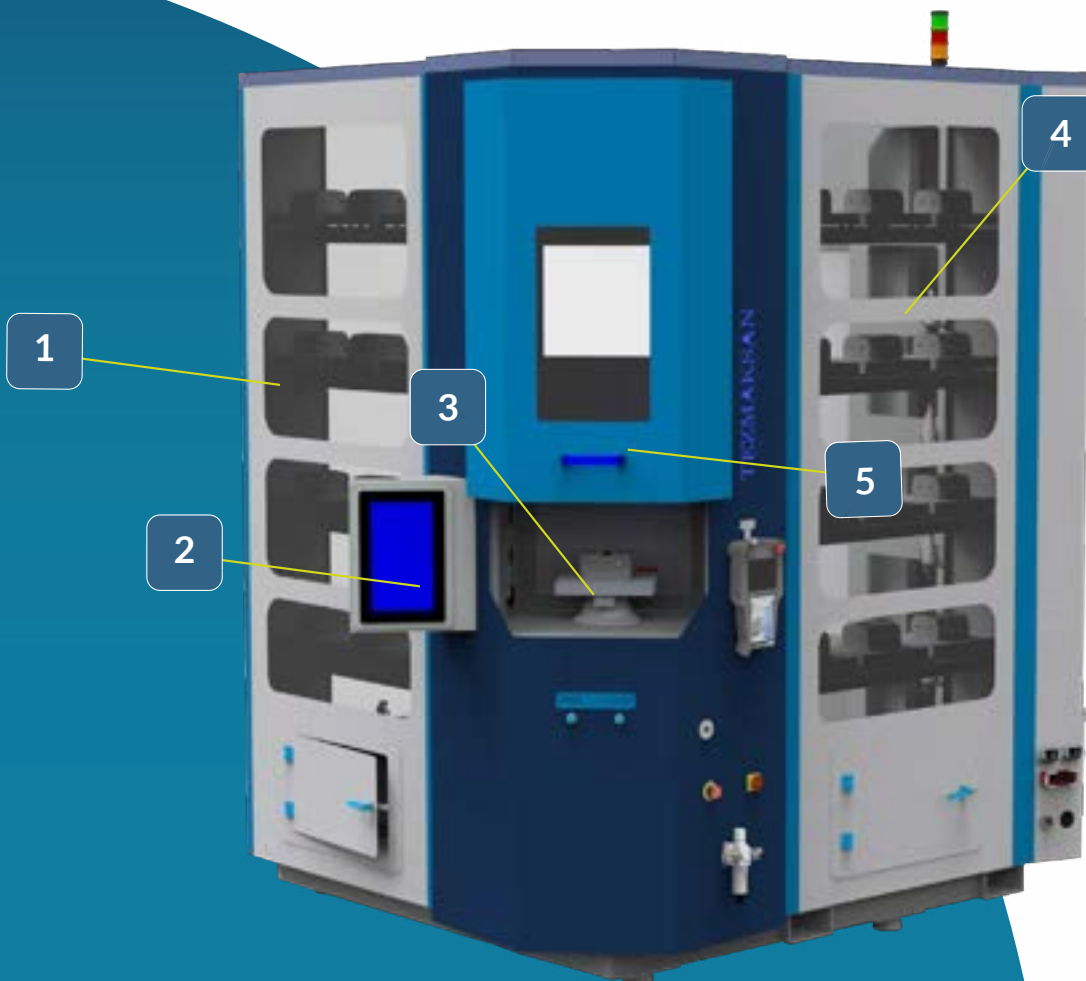
- > Compatible with 12 kg / 25 kg and 35 kg and above 6 axis robot
- > 24/7 Non-stop production
- > One pallet station for loading
- > **RoboCAM-FMS** software
- > 18 no. of Tool changer
- > 18 no. of Pallet
- > Developed for single and/or multiple CNC machine(s)
- > Optional specifications (barcode reader, BUS communication etc.)



Pallet Pool PT-24

Pallet Pool PT-24

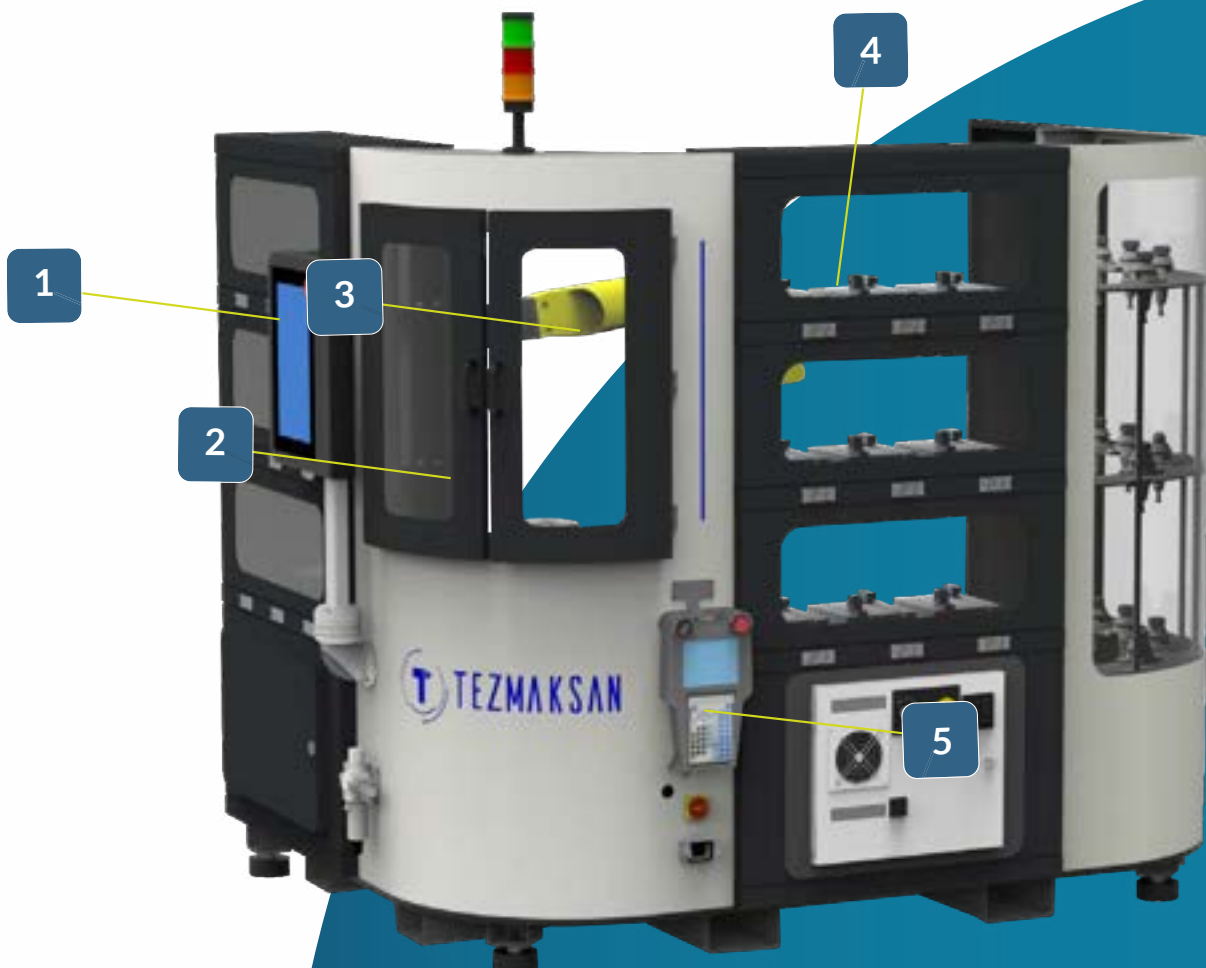
- 1 Tool location shelves
- 2 Pallet Pool controller with RoboCAM - FMS software
- 3 Operator Load / Unload station with zero clamping system
- 4 Pallet location shelves
- 5 Sliding autodoor



Pallet Pool PT-18

Pallet Pool PT-18

- 1 Pallet Pool controller with RoboCAM - FMS Software
- 2 Manual Door for Loading / Unloading
- 3 6 Axis industrial robot
- 4 Tool location shelves
- 5 Teach pendant



CubeBOX™ Tower

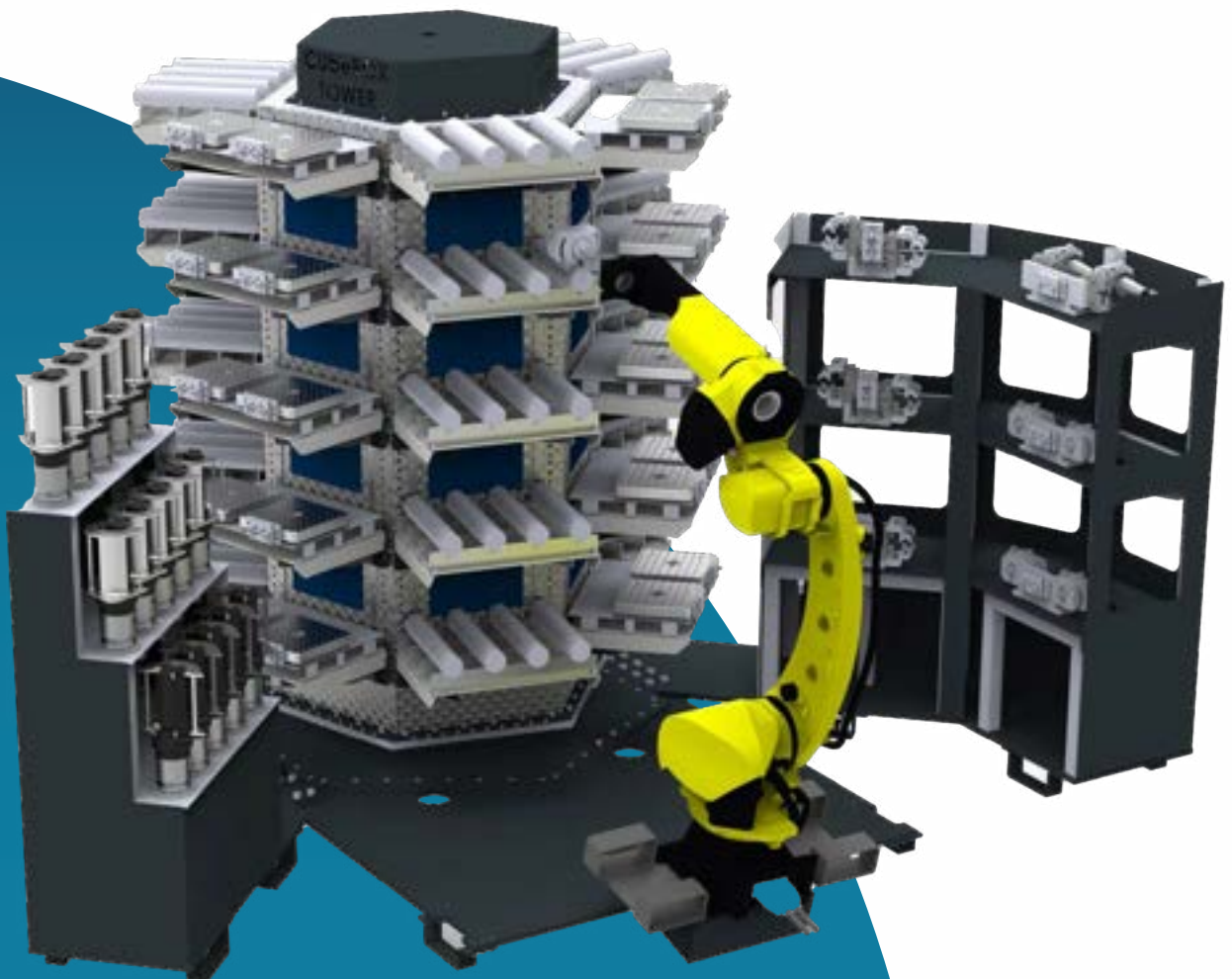
CubeBOX™ Tower is an advanced automation solution specifically designed for businesses aiming for maximum capacity and minimal downtime in industrial production. With its hexagonal rotating tower structure, it adapts flexibly to various production needs.

High Efficiency, Uninterrupted Production

Thanks to its advanced automation architecture, it can seamlessly perform part loading, pallet, vise, and cutting tool changes without manual intervention.

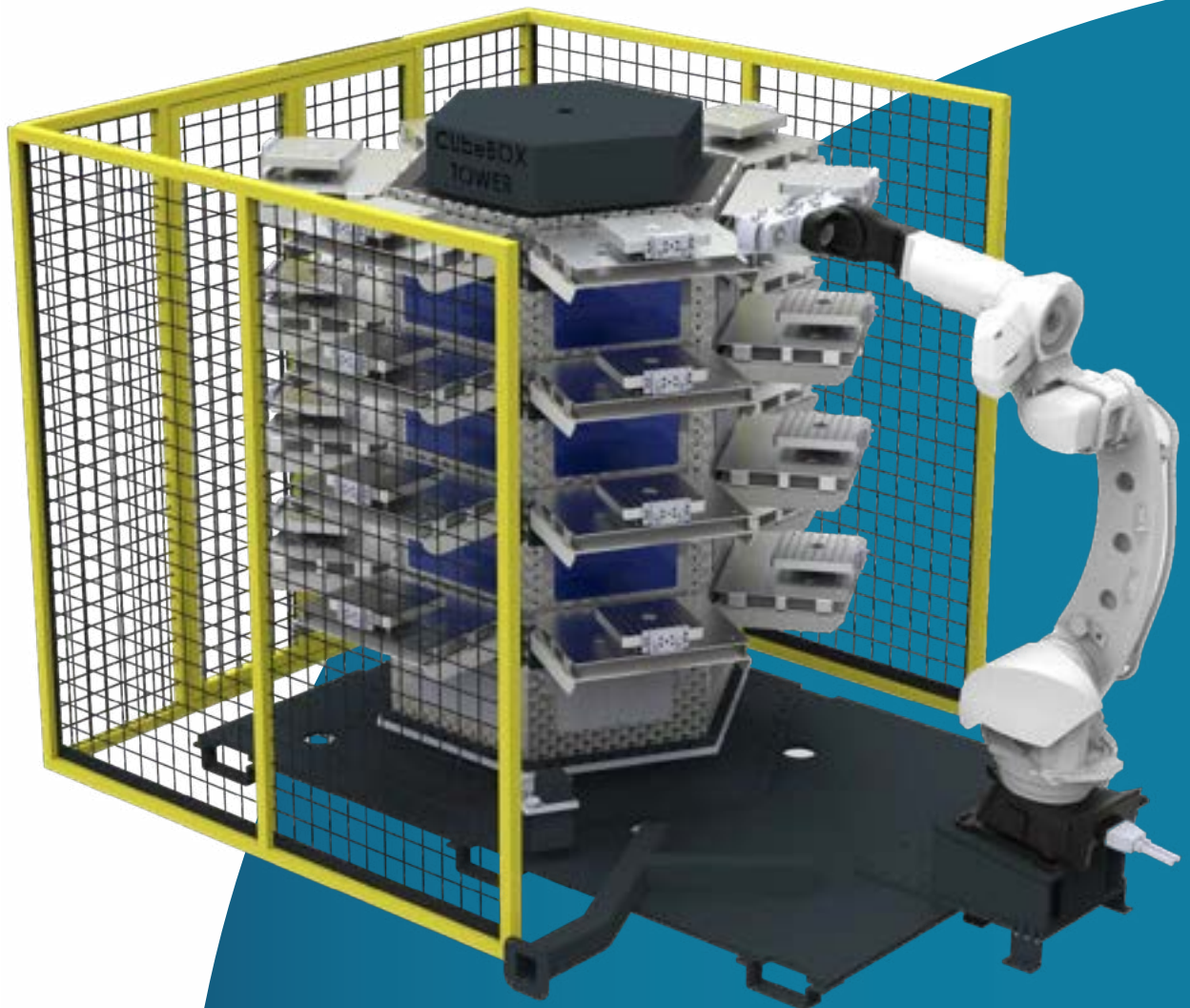
The rotating hexagonal tower design allows for the storage and easy access of multiple different parts simultaneously.

Ensures uninterrupted operation during production, minimizing operational errors and maximizing efficiency.



Superior Carrying Capacity

CubeBOX™ Tower stands out with its high carrying capacity, enabling it to handle more parts and tools compared to similar automation systems. This provides a significant advantage in large-scale production lines and high-load applications.



ROBOCAM



Thanks to our innovative, compact robot cell **CubeBOX** system such that up to 3 CNC Machines can be operated without downtime during loading and unloading the workpieces from the machine(s) without any brand restriction.

Our user-friendly software **RoboCAM** converts 2D CAD Drawings of the workpieces to CAM, so Robot programming and CAM knowledge are not needed anymore. The operator has only one thing to do, loading and unloading the workpiece.

As an engineering company, we are focusing on Industry 4.0 with turnkey projects, automation integration, installation, and after-sales services.

ROBOCAM+

Plus



- Creating a programmatic workflow that allows for any type of transport scenario
- Floor and part tracking thanks to the object-oriented structure
- Collision and error protection linked to part tracking
- Duration and efficiency calculation and reporting
- Station-based work structure where every point the part passes through is defined
- Multipart work allowing multiple parts to be stacked in the tray slot or at stations
- Fully compatible with Fanuc and Kuka robots
- Programming logic similar to the commands within the robot
- Ability to save and reuse robot movement positions
- U-Frame calculation from 3 points
- Real-time display of cell models created with RoboCell Software through 3D modeling
- Theme selection (Blue, dark, and light)

CubeBOXTM ServoDOOR

> CubeBOXTM ServoDOOR - Single Door

CubeBOXTM ServoDOOR You can use the single door model for your CNCs. Our one-door models are equipped with servo motors.

Stroke	L
750	1000
1115	1365
1615	2115
2115	2365

> CubeBOXTM ServoDOOR - Double Door

You can use the **CubeBOXTM ServoDOOR** double door single unit model for your double door CNCs. We have models equipped with servo motors.

Stroke	L
750	1000
1115	1365
1615	2115
2115	2365

CubeBOX ServoDOOR - Double Door Double Unit



- > You can use the **CubeBOX™ ServoDOOR** double door double unit model for your double door CNC machines. We have models equipped with servo motors.

Stroke	L
2x750	1950
2x1000	2450
2x1250	2950
2x1500	3450
2x2000	4450

- > **Energy consumption:** It saves costs to a minimum level. The energy consumption of it is equal to a 65W light bulb during operation.
- > **Operator Errors:** It communicates with the CNC, minimizing the errors, malfunctions caused by the operators. the **CubeBOX™ ServoDOOR** is a universal system that can be connected to any brand of new or present CNC machines.
- > **Work safety:** Protects operators from injuries and accidents.



	CubeBOX Blues DR MINI	CubeBOX Blues DR SPACE CABINET	
PROPERTIES	Version	COMPACT V01***	COMPACT V01***
	Minimum Clamping Diameter for Round Steel Workpieces**	5 mm.	5 mm.
	Maximum Clamping Diameter for Round Steel Workpieces**	350 mm.	-
	Minimum Edge Width for Hexagonal Steel Workpieces**	10 mm.	-
	Maximum Edge Width for Hexagonal Steel Workpieces**	80 mm.	80 mm.
	Maximum Height of Steel Workpiece**	80-100 mm.	105 mm. (5 Drawer)
	Minimum Usable Pallet Width	-	-
	Maximum Usable Pallet Width	-	-
	Cell Depth	1220 mm.	1110 mm.
	Cell Width	1600 mm.	2106 mm.
	Cell/Guard Height	2229 mm.	2420 mm.
	Total Weight of Standard Cell	1150 Kg.	1000 Kg.
	Supply Voltage	Single Phase 220 V AC	Single Phase 380 V AC
	Air Consumption	<80 L/min.	<80 L/min.
	Maximum Load on each Drawer	200 Kg.	100 Kg.
Maximum Total Load on Rotating System	-	-	
PAYLOAD	7 Kg Payload Capacity	•	•
	10 Kg Payload Capacity		•
	12 Kg Payload Capacity	•	
	14 Kg Payload Capacity		•
	25 Kg Payload Capacity		
	35 Kg Payload Capacity		
	50 Kg Payload Capacity		
	70 Kg Payload Capacity		
	Payload Capacity Above 70 Kg		
STANDARD SPECIFICATIONS	Plug & Play Installation	•	•
	Pneumatic Door Automation for 1 CNC Machine	•	•
	Safety Fence for 1 CNC Machine	•	•
	Operator-Side Light Curtain Safety	•	•
	Robot-Machine Communication Interface for 1 CNC	•	•
	Separator/ Inlay-Type Workpiece Stacking System	•	•
	Compatible with Round Workpieces	•	•
	Compatible with Hexagonal Workpieces	•	•
	Compatible with Casted & Forged Workpieces	•	•
	3-Color Industrial Signal Tower	•	•
	Supports Single Gripper Configuration	•	•
	Supports Multi-Gripper Configuration	•	•
	RoboCAM Smart Automation Software and Industrial PC	•	•
	Air Blow-Off Cleaning Function with Nozzle	•	•
OPTIONAL ACCESSORIES	CNC Door Automation with CubeBOX ServoDOOR	◦	◦
	FANUC / KUKA / ABB / YASKAWA / CRP Robot Integration	◦	◦
	Automatic Measuring Station	◦	◦
	Manual Measuring Station	◦	◦
	Deburring (Burr Removal) Station	◦	◦
	CubeBOX AMR Integration		
	Area Scanner / Sensor	◦	◦
	3rd Safety Light Curtain on Operator Side	◦	◦
	Air-Flow Based Cleaning Station	◦	◦
	Manual Measuring Station	◦	◦
	Profinet Communication Protocol	◦	◦
	I/O Link Communication Protocol	◦	◦
	Ethernet/IP Communication Protocol	◦	◦
	Universal Tool Changer	◦	◦
	Workpiece Rotation Unit	◦	◦
	Workpiece Orientation & Adjustment Unit	◦	◦
7th Axis Linear Rail (Slider) for Multi-CNC Machine Tending	◦	◦	

◦ Accessories excluded in the Price • Accessories included in the Price *Suitable for 8" - 10" (Inch) CNC Horizontal Lathes

		CubeBOX Blues RT	CubeBOX Blues RT-S
PROPERTIES	Version	COMPACT V01***	COMPACT V01***
	Minimum Clamping Diameter for Round Steel Workpieces**	5 mm.	5 mm.
	Maximum Clamping Diameter for Round Steel Workpieces**	200 mm.	200 mm.
	Minimum Edge Width for Hexagonal Steel Workpieces**	10 mm.	10 mm.
	Maximum Edge Width for Hexagonal Steel Workpieces**	100 mm.	100 mm.
	Maximum Height of Steel Workpiece**	400 mm.	400 mm.
	Minimum Usable Pallet Width	-	-
	Maximum Usable Pallet Width	-	-
	Cell Depth	1704 mm.	1704 mm.
	Cell Width	1925 mm.	1925 mm.
	Cell/Guard Height	2395 mm.	2395 mm.
	Total Weight of Standard Cell	1250 Kg.	1400 Kg.
	Supply Voltage	Three Phase 380 V AC	Three Phase 380 V AC
	Air Consumption	<80L/min.	<80L/min.
	Maximum Load on each Drawer		-
	Maximum Total Load on Rotating System	200 Kg.	200 Kg.
PAYLOAD	7 Kg Payload Capacity	•	•
	10 Kg Payload Capacity	•	•
	12 Kg Payload Capacity	•	•
	14 Kg Payload Capacity	•	•
	25 Kg Payload Capacity	•	•
	35 Kg Payload Capacity		
	50 Kg Payload Capacity		
	70 Kg Payload Capacity		
	Payload Capacity Above 70 Kg		
STANDARD SPECIFICATIONS	Plug & Play Installation	•	•
	Pneumatic Door Automation for 1 CNC Machine	•	•
	Safety Fence for 1 CNC Machine	•	•
	Operator-Side Light Curtain Safety	•	•
	Robot-Machine Communication Interface for 1 CNC	•	•
	Separator/ Inlay-Type Workpiece Stacking System	•	•
	Compatible with Round Workpieces	•	•
	Compatible with Hexagonal Workpieces	•	•
	Compatible with Casted & Forged Workpieces	•	•
	3-Color Industrial Signal Tower	•	•
	Supports Single Gripper Configuration	•	•
	Supports Multi-Gripper Configuration	•	•
	RoboCAM Smart Automation Software and Industrial PC	•	•
	Air Blow-Off Cleaning Function with Nozzle	•	•
OPTIONAL ACCESSORIES	CNC Door Automation with CubeBOX ServoDOOR	◦	◦
	FANUC / KUKA / ABB / YASKAWA / CRP Robot Integration	◦	◦
	Automatic Measuring Station	◦	◦
	Manual Measuring Station	◦	◦
	Deburring (Burr Removal) Station	◦	◦
	CubeBOX AMR Integration		
	Area Scanner / Sensor	◦	◦
	3rd Safety Light Curtain on Operator Side	◦	◦
	Air-Flow Based Cleaning Station	◦	◦
	Manual Measuring Station	◦	◦
	Profinet Communication Protocol	◦	◦
	I/O Link Communication Protocol	◦	◦
	Ethernet/IP Communication Protocol	◦	◦
	Universal Tool Changer	◦	◦
	Workpiece Rotation Unit	◦	◦
	Workpiece Orientation & Adjustment Unit	◦	◦
7th Axis Linear Rail (Slider) for Multi-CNC Machine Tending	◦	◦	

◦ Accessories excluded in the Price • Accessories included in the Price *Suitable for 8" - 10" (Inch) CNC Horizontal Lathes

		CubeBOX AMR SOUL	CubeBOX HEXAGON TOWER
PROPERTIES	Minimum Clamping Diameter for Round Steel Workpieces**	10 mm.	.
	Maximum Clamping Diameter for Round Steel Workpieces**	350 mm.	.
	Minimum Edge Width for Hexagonal Steel Workpieces**	10 mm.	.
	Maximum Edge Width for Hexagonal Steel Workpieces**	200 mm.	.
	Maximum Height of Steel Workpiece**	250 mm.	400 mm. (Adjustable)
	Minimum Usable Pallet Width	.	48 x 250 mm.
	Maximum Usable Pallet Width	.	24 x 600 mm.
	Cell Depth	1750 mm.	2000 mm.
	Cell Width	2000 mm.	2500 mm.
	Cell/Guard Height	2200 mm.	2750 mm.
	Total Weight of Standard Cell	1500 Kg.	2500 Kg.
	Maximum Load on each Shelf	.	200 Kg.
	Supply Voltage	Single Phase 220 V AC	Single Phase 220 V AC
	Air Consumption	<80L/min.	<80L/min.
	PAYLOAD	12 Kg Payload Capacity	•
20 Kg Payload Capacity		•	•
35 Kg Payload Capacity		•	•
Payload Capacity Above 35 Kg		•	Max. 80 Kg
AMR (Autonomous Mobile Robot)		•	.
500 Kg Payload Capacity		•	.
600 Kg Payload Capacity		◦	.
1000 Kg Payload Capacity		◦	.
Maximum Workpiece Dimensions		1200 x 1200 mm.	.
Maximum Speed		<2.2 m/s	.
Positioning Accuracy		± 10mm	.
STANDARD SPECIFICATIONS	Stop Angle Precision	±1°	.
	Plug & Play Installation	•	•
	Pneumatic Door Automation for 1 CNC Machine	•	•
	Safety Fence for 1 CNC Machine	•	•
	Operator-Side Light Curtain Safety	2 Set	2 Pcs
	Robot-Machine Communication Interface for 1 CNC	•	•
	Separator/ Inlay-Type Workpiece Stacking System	•	•
	Compatible with Round Workpieces	•	•
	Compatible with Hexagonal Workpieces	•	•
	Compatible with Casted & Forged Workpieces	•	•
	3-Color Industrial Signal Tower	•	•
	Supports Single Gripper Configuration	•	•
	Supports Multi-Gripper Configuration	•	•
	RoboCAM Smart Automation Software and Industrial PC	•	•
Air Blow-Off Cleaning Function with Nozzle	•	•	
OPTIONAL ACCESSORIES	CNC Door Automation with CubeBOX ServoDOOR	◦	◦
	FANUC / KUKA / ABB / YASKAWA / CRP Robot Integration	◦	◦
	Automatic Measuring Station	◦	◦
	Deburring (Burr Removal) Station	◦	◦
	CubeBOX AMR Integration	◦	◦
	Area Scanner / Sensor	◦	◦
	3rd Safety Light Curtain on Operator Side	◦	◦
	Air-Flow Based Cleaning Station	◦	◦
	Manual Measuring Station	◦	◦
	Automatic Measuring Station	◦	◦
	Profinet Communication Protocol	◦	◦
	I/O Link Communication Protocol	◦	◦
	Ethernet/IP Communication Protocol	◦	◦
	Universal Tool Changer	◦	◦
	Workpiece Rotation Unit	◦	◦
	Workpiece Orientation & Adjustment Unit	◦	◦
7th Axis Linear Rail (Slider) for Multi-CNC Machine Tending	◦	◦	

◦ Accessories excluded in the Price • Accessories included in the Price *Suitable for 8" - 10" (Inch) CNC Horizontal Lathes

	CubeBOX SOUL S	CubeBOX SOUL M	CubeBOX SOUL L	
PROPERTIES	Version	COMPACT V01***	COMPACT V01***	COMPACT V01***
	Minimum Clamping Diameter for Round Steel Workpieces**	5 mm.	5 mm.	5 mm.
	Maximum Clamping Diameter for Round Steel Workpieces**	100 mm.	180 mm.	No limit
	Minimum Edge Width for Hexagonal Steel Workpieces**	10 mm.	10 mm.	10 mm.
	Maximum Edge Width for Hexagonal Steel Workpieces**	100 mm.	180 mm.	180 mm. and more
	Maximum Height of Steel Workpiece**	100 mm.	100 mm.	180 mm. and more
	Minimum Usable Pallet Width	2150 mm.	2500 mm.	Min 5000 mm.
	Maximum Usable Pallet Width	1700 mm.	2000 mm.	Min 5000 mm.
	Cell Depth	2150 mm.	2200 mm.	2200 mm.
	Cell Width	600 Kg.	1000 Kg.	1250 Kg.
	Supply Voltage	Three Phase 220 V AC	Three Phase 380 V AC	Three Phase 380 V AC
	Maximum Load on each Tray	200 Kg.	200 Kg.	200 Kg.
	Air Consumption	<80L/min.	<80L/min.	<80L/min.
PAYLOAD	12 Kg Payload Capacity	•	•	•
	25 Kg Payload Capacity	•	•	•
	35 Kg Payload Capacity	•	•	•
	Payload Capacity Above 35 Kg			•
STANDARD SPECIFICATIONS	Plug & Play Installation	•	•	•
	Pneumatic Door Automation for 1 CNC Machine	•	•	•
	Safety Fence for 1 CNC Machine	•	•	•
	Operator-Side Light Curtain Safety	•	•	•
	Robot-Machine Communication Interface for 1 CNC	•	•	•
	Separator / Inlay-Type Workpiece Stacking System	•	•	•
	Compatible with Round Workpieces	•	•	•
	Compatible with Hexagonal Workpieces	•	•	•
	Compatible with Casted & Forged Workpieces	•	•	•
	3-Color Industrial Signal Tower	•	•	•
	Supports Single Gripper Configuration	•	•	•
	Supports Multi-Gripper Configuration	•	•	•
	RoboCAM Smart Automation Software and Industrial PC	•	•	•
Air Blow-Off Cleaning Function with Nozzle	•	•	•	
OPTIONAL ACCESSORIES	CNC Door Automation with CubeBOX ServoDOOR	◦	◦	◦
	FANUC / KUKA / ABB / YASKAWA / CRP Robot Integration	◦	◦	◦
	Automatic Measuring Station	◦	◦	◦
	Deburring (Burr Removal) Station	◦	◦	◦
	CubeBOX AMR Integration			
	Area Scanner / Sensor	◦	◦	◦
	3rd Safety Light Curtain on Operator Side	◦	◦	◦
	Air-Flow Based Cleaning Station	◦	◦	◦
	Manual Measuring Station	◦	◦	◦
	Automatic Measuring Station	◦	◦	◦
	Profinet Communication Protocol	◦	◦	◦
	I/O Link Communication Protocol	◦	◦	◦
	Ethernet/IP Communication Protocol	◦	◦	◦
	Universal Tool Changer	◦	◦	◦
	Workpiece Rotation Unit	◦	◦	◦
Workpiece Orientation & Adjustment Unit	◦	◦	◦	
7th Axis Linear Rail (Slider) for Multi-CNC Machine Tending	◦	◦	◦	

◦ Accessories excluded in the Price

• Accessories included in the Price

*Suitable for 8" - 10" (Inch) CNC Horizontal Lathes

NOTES



TEZMAKSAN
ROBOT TECHNOLOGIES

Version 070325

The information provided in this product catalogue is intended for general informational purposes only. Product specifications are subject to change without notice. For accurate details, please contact us directly.

