

Bell

SINCE 1909

Glued-Laminated Timber Monopole

Glued-laminated timber (glulam) monopoles are a sustainable and customizable alternative to midsize steel or composite poles. Poles are made to order in the US and offer greater strength and stiffness compared to traditional round timber poles.

APPLICATIONS

- Single or multi-user configurations
- Rural communities and public safety
- Temporary relocation
- Construction, mining, and warehouse sites

STANDARD DIMENSIONS

- Square and rectangular profiles
- Constant widths ranging from nominal 8" [203.2 mm] to 30" [762 mm]
- Constant or tapered depths up to 72" [1,829 mm]
- Standard height options from 30 ft [9.2 m] to 100 ft [30.5 m] above groundline with or without intermediate spllices
- Additional sizes available by request

MATERIAL SPECIFICATIONS

- Solid laminated wood pole manufactured according to ANSI A190.1
- Standard wood species include Douglas Fir and Southern Pine
- Pressure treated with DCOI or CCA preservative according to AWPA U1 and T1
- Non-corrosive and ideal for deployment near coastal waters

FOUNDATION

- Direct embed with aggregate or concrete backfill as required by design
- Design available based on geotechnical report or specified soil conditions

STRUCTURAL DESIGN

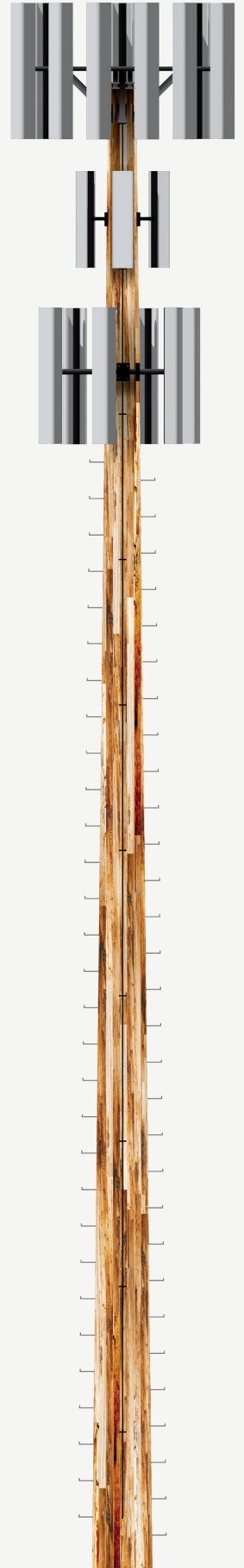
- Preliminary selection tables available for planning and budgeting (Available Soon)
- Project analysis per TIA-222, AASHTO, local building codes and required standards
- Design according to the National Design Specification (NDS) for Wood Construction

APPURTENANCES

- Compatible with many industry standard side pipe mounting systems
- Adapters required for ring mounts or mounting frames
- Exterior mounted cables, conduit, antennas, equipment, climbing systems, and fall protection systems

MANUFACTURING AND FABRICATION

- Incising or groundline boring as required according to AWPA or specifications
- Cut, fabricated, and delivered according to specifications and mounting requirements



Round Timber Monopole

Round timber monopoles are a cost effective and versatile solution for macro telecom solutions. Delivery lead times are minimized by our US inventory and distribution partners.

APPLICATIONS

- Single or multi-user configurations
- Rural communities and public safety
- Temporary relocation
- Construction, mining, and warehouse sites
- Rapid and natural disaster response

STANDARD DIMENSIONS

- Natural taper round profiles ranging from 8" [203.2 mm] to 12" [205 mm] diameter at tip
- Standard height options from 30 ft [9.2 m] to 90 ft [27.5 m] above groundline with no intermediate splices
- Additional sizes available by request

MATERIAL SPECIFICATIONS

- Solid round wood pole visually graded according to ASTM D3200 and D25
- Standard wood species include Douglas Fir, Western Red Cedar and Southern Pine
- Pressure treated with DCOI or CCA preservative according to AWPA U1 and T1
- Non-corrosive and ideal for deployment near coastal waters

FOUNDATION

- Direct embed with aggregate or concrete backfill as required by design
- Design available based on geotechnical report or specified soil conditions

STRUCTURAL DESIGN

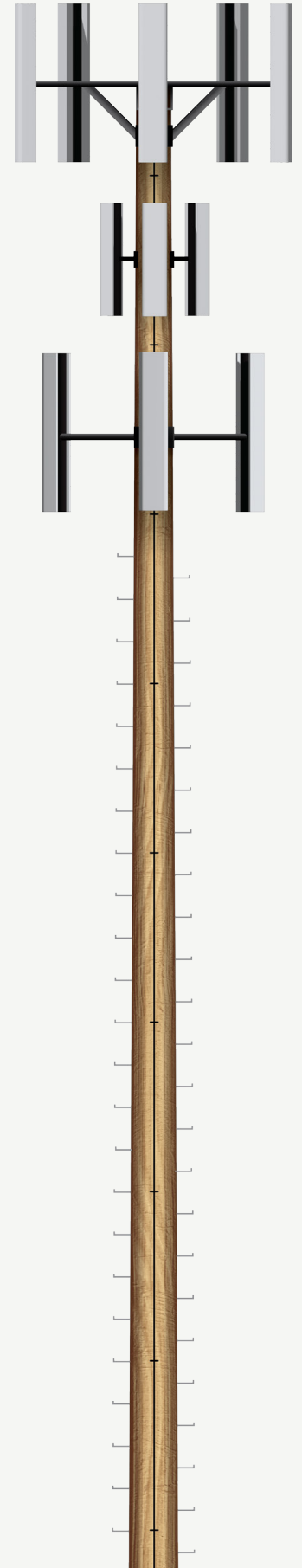
- Preliminary selection tables available for planning and budgeting (Available Soon)
- Project analysis per TIA-222, AASHTO, local building codes and required standards
- Design according to the National Design Specification (NDS) for Wood Construction

APPURTENANCES

- Compatible with many industry standard side and ring mounting systems
- Exterior mounted cables, conduit, antennas, equipment, climbing systems, and fall protection systems

MANUFACTURING AND FABRICATION

- Incising or groundline boring as required according to AWPA or specifications
- Poles may be cut, fabricated, and delivered according to specifications and mounting requirements or cut and fabricated on-site





Self-Supporting Towers

Bell Self-supporting towers are free standing, multi-member structures custom designed and manufactured according to project requirements and specifications, as all-wood towers or hybrid towers built from wood and steel. Prefabricated and modular components are bolted together on site to reduce installation time compared to knocked down steel lattice towers with many pieces. All towers utilize sustainable and renewable wooden elements, significantly reducing CO2 emissions and making it a low carbon alternative to traditional all-steel structures.

APPLICATIONS

- Multi-user configurations
- Ideal for cellular and wireless communications towers
- Microwave
- Public safety
- Broadcast
- Surveillance
- Weather Stations
- Sports Lighting

STANDARD DIMENSIONS

- Standard height options from 40 ft [12.2 m] to 160 ft [48.8 m]
- Individual member sizing and structure footprint based on height and loading requirements

MATERIAL SPECIFICATIONS

- All-wood or timber-steel hybrid based on project requirements and desired appearance
- Solid laminated wood members manufactured according to ANSI A190.1 from responsibly sourced lumber
- Standard wood species include Douglas Fir and Southern Pine
- Wood is pressure treated with DCOI or CCA preservative according to AWPA U1 and T1
- Wood members are non-corrosive and ideal for deployment near coastal waters
- Hot-dip galvanized structural steel and connection components

FOUNDATION

- Traditional foundation systems including mats, isolated piers, and mats with raised piers
- Alternative foundation systems including concrete or steel grade beams or helical piers

STRUCTURAL DESIGN

- Project analysis per TIA-222, AASHTO, local building codes and required standards
- Design according to the National Design Specification (NDS) for Wood Construction

APPURTENANCES

- External or internal routing of conduit and cables
- Platforms, antenna mounts and lighting accessories
- Climbing and fall protection systems

MANUFACTURING AND FABRICATION

- Custom wood and steel manufacturing available for a full range of heights
- Pre-fabricated, test fitted connections, and pre-assembled based on installation requirements
- Shipped as knocked down members or as pre-assembled modular components

