



5

Key Reasons

Why the FANUC CRX Collaborative Robot is Right for Everyone.

What defines a Cobot?

If you're new to collaborative robots you may have asked...

Cobot is an interchangeable term for collaborative robot. What makes a robot a cobot? A cobot is power and force limited, and has force-monitoring sensors that stop the robot on contact. This means that if the cobot makes contact with a person or object it stops quickly and safely.

The Most Extensive Collaborative Robot Lineup



Did you know?

FANUC has the largest lineup with thirteen different models able to handle from 3 to 50kg. All of FANUC's cobots are industrial grade – meaning they are designed with the same world-renowned reliability that FANUC's products are known for.

#1

Ease of Use

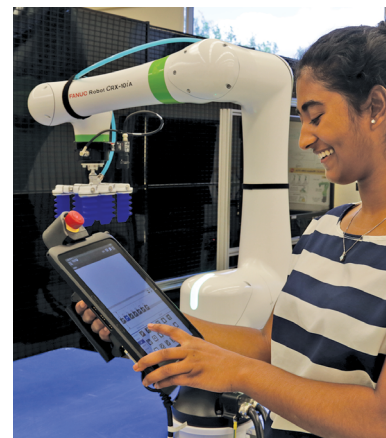
Truly a game changer in robotic automation as it applies to collaborative robots.

Everyone wants things easier – From shipping to installation, to setup and programming, today's manufacturer requires automation that increases productivity while saving costs.

The CRX offers quick deployment and easy setup. With both the CRX and its controller being lightweight and compact, bulky equipment such as overhead cranes to get things into place are not required. The CRX's small footprint and powerful R-30iB mini plus controller requires zero fencing or guarding, and runs on standard 120V power outlet - making setup a breeze. All of these benefits help companies reduce costs, save valuable floorspace, and improve the bottom line.



But the CRX's #1 "Ease of Use" benefit is its Simple Drag and Drop Programming. 30 years ago, robot programming was a high-level structured language like Fortran or C++. An engineer or maintenance technician went to school to learn how to learn the programming language. Both are very powerful, but not easy to use.



With FANUC's Tablet Teach Pendant – simple programming becomes reality. Easily program and teach points with the Tablet Teach Pendant. The drag and drop interface for lead-through teaching and simple programming is easy with no prior robotic experience needed.

To see just how easy it is check out the [FANUC CRX e-Learning videos](#), where you can learn how to get started with the CRX within minutes. Register today to begin these free online CRX training modules designed to get your production up and running in no time.

With the CRX cobot and Tablet Teach Pendant, programming automation is easier than ever, even without prior robotic experience!

#2

Reliable and Safe

The CRX is an industry game-changer bringing the industrial reliability that FANUC is known for into the collaborative space.

The CRX is the only collaborative robot on the market that is backed by the 8 years zero maintenance pledge on motors, reducers, sensors, cables and grease, combined with industrial strength reliability proven through accelerated life tests on the following parts: castings, reducers, cables, sensors and PCBs.



A graphic featuring the text 'CRX' vertically on the left. To its right, a green bar contains the text 'EIGHT years' in white. Further right, a dark grey bar contains the text 'ZERO maintenance' in white. The number '8' is partially obscured by the 'ZERO' text.

Safety is a Priority. The CRX was designed with high safety standards. The highly sensitive contact stop, stops the robot smoothly at light contact force without impact, in addition the rounded overall design, offset arm reduces pinchpoints.

How can we pledge this?

FANUC's factories have always been vertically integrated. This means we manufacturer nearly every single component with FANUC robots and machine tools in our factories. Vertical integration allows us to control every process in the production phase, including quality, and meeting FANUC's high standard of reliability.

How do we know? Through constant quality and reliability testing procedures for all of our equipment. We run our products through extremely rigorous tests to simulate years of industrial use.



Over
1M

As the global leader in automation, we have expert experience in industrial robots, with an installed base of over **1,000,000 worldwide.**

Five Key Reasons Why

The FANUC CRX Collaborative Robot is Right for Everyone

FANUC

#3

Applications

Collaborative robots are used for a variety of applications – beyond simple pick and place tasks.



The possibilities are truly endless but common applications for cobots are: AI vision inspection, arc welding, machine tending, palletizing, vision-guided pick and place, finishing, sanding and more. Did you know that FANUC's line of cobots has inherited the same intelligence that our traditional yellow robots have had for decades? For example, FANUC's integrated vision including 2D, 3D, bin pick, and area scanners – all incredible vision technology right in our cobots as a plug and play feature. Why choose FANUC? FANUC is truly your "one stop shop" for advanced hardware and software technologies. When it comes to automation, being able to work with one supplier is a major advantage that streamlines the entire process.



Adding to CRX Application flexibility is FANUC force sensors. A force sensor gives the robot the sense of touch and feel. This is very useful for [material removal, including sanding, buffing, and deburring, as well as assembly applications](#). Force sensors are plug and play with FANUC's cobots including the CRX.

The **Flip-Under** motion of the **CRX 10iA/L** and **CRX 20iA/L** increases your productivity, work space utilization and efficiency. This feature is especially useful in machine tending applications.

#4

Easy Integration of EOAT and Peripheral Devices

FANUC has long-established relationships with many industry leaders who supply End-of-Arm-Tooling (EOATs), accessories, and plugins for robot applications.

We've partnered with an expansive list of peripheral device suppliers who have developed devices that can be easily integrated into collaborative applications using the CRX. Our CRX Device Partners are FANUC-approved, saving you time on design and integration to get your process up and running quickly.



Selecting and integrating peripheral devices and EOAT is straightforward when using [FANUC's approved list of CRX device suppliers](#) – many are simply plug and play and up and running! Find the device that's right for you from our ever-growing number of approved CRX device suppliers here.



FANUC is always close by with...

289 service locations supporting 108 countries throughout the world - including 25 locations in the Americas.

#5

Pick the team known for caring about your success

Every consumer wants the peace of mind that comes from knowing they are purchasing the highest quality and reliability when making investments in their business' equipment.

The same applies to buying your first collaborative robot. FANUC takes pride in the close relationships we have built based on trust with both long time and new customers.

We offer several key attributes that no other automation company provides. This is why we are driven by a culture of Service First. Service First is our commitment to you - our valued customer. FANUC provides lifetime support on our products at 289 service locations supporting 108 countries throughout the world.

FANUC is the largest global automation supplier. Our headquarters for North and South America is located in in Rochester Hills, Michigan, and we have 25 regional locations to service the automation needs throughout the Americas – and 20 of those offices offer customer training.

We have an extensive network of Authorized System Integrators (ASI) – all extensions of the FANUC family. Since 1996, we've built very close relationships with these integrators who are located throughout North and South America. They are FANUC customers who buy our products and integrate them into full turnkey systems for virtually every market and application.

Whatever type of support a customer needs – from simple programming to a full turnkey system, our team is ready to help you solve challenges and meet your goals.

If you're thinking about a cobot, contact us today - let's start the conversation.

WWW.CRX.FANUCAMERICA.COM