

Exploring the Highs and Lows of Landscapes: Demystifying Topographic Maps

Presented by:
Russell Graham

Director of Earth and Mineral Sciences Museum

Julianne Snider

Asst. Director Earth and Mineral Sciences Museum

Kathleen Hill and Ashley Rapsinski
CSATS in the College of Education

October 28, 2017 (9:00 am – 3:00 pm)
Earth and Mineral Science Museum
University Park, PA 16802



Want to learn more about Earth's geographic features? This workshop will focus on landscapes, their origin, and recognition of landforms on topographic maps. The topographic map is the most common tool used by geologists, geomorphologists, geographers, landscapers, and land managers to identify landscape types. Topographic maps are also essential as way finders for people in areas that are not familiar to them. These maps represent a three dimensional surface (landscape) on a two dimensional piece of paper by incorporating contour lines that show points of equal elevation.

In this workshop, we will discuss and illustrate how topographic maps are made. We will have a series of practical exercises with readily available materials (play-dough, kinetic sand, line levels, compasses, tape measures, etc.) that will be used to help facilitate the understanding of contour lines and the diagnostic shapes for landscapes. We will also illustrate the basic principles of way finding using topographic maps. The workshop will be composed of hands on activities that can be used by teachers in the classroom and participants will get to experience the augmented reality sandbox.

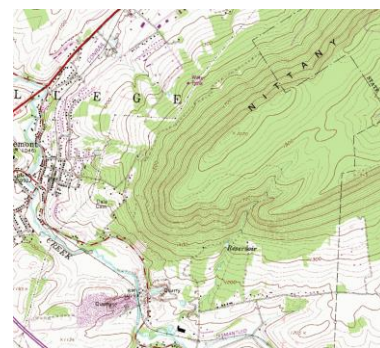
Target Audience: Teachers of Middle School Students



This workshop is FREE to all educators with ACT 48 (5.5 hours) available.

All i-STEAM workshops are aligned to the PA Science and Technology standards, Engineering Education Standards, and Next Generation Science Standards.

A continental breakfast and lunch are provided by the Center for Science and the Schools (CSATS) in the College of Education. Maximum enrollment is 24, register online now to reserve a spot – <http://csats.psu.edu/overview-of-csats-programs/academic-year-workshops/isteam-workshops#registration>.



For more information email Ashley Rapsinski at adb236@psu.edu or call 814-865-1713.

Sponsored by: The Center for Science and the Schools

This publication is available in alternative media on request. Penn State encourages qualified persons with disabilities to participate in its programs and activities. If you anticipate needing any type of accommodation or have questions about the physical access provided, please contact Ashley Rapsinski at adb236@psu.edu in advance of your participation or visit. Penn State is an equal opportunity, affirmative action employer, and is committed to providing employment opportunities to all qualified applicants without regard to race, color, religion, age, sex, sexual orientation, gender identity, national origin, disability or protected veteran status. U.Ed. EDU 18-08