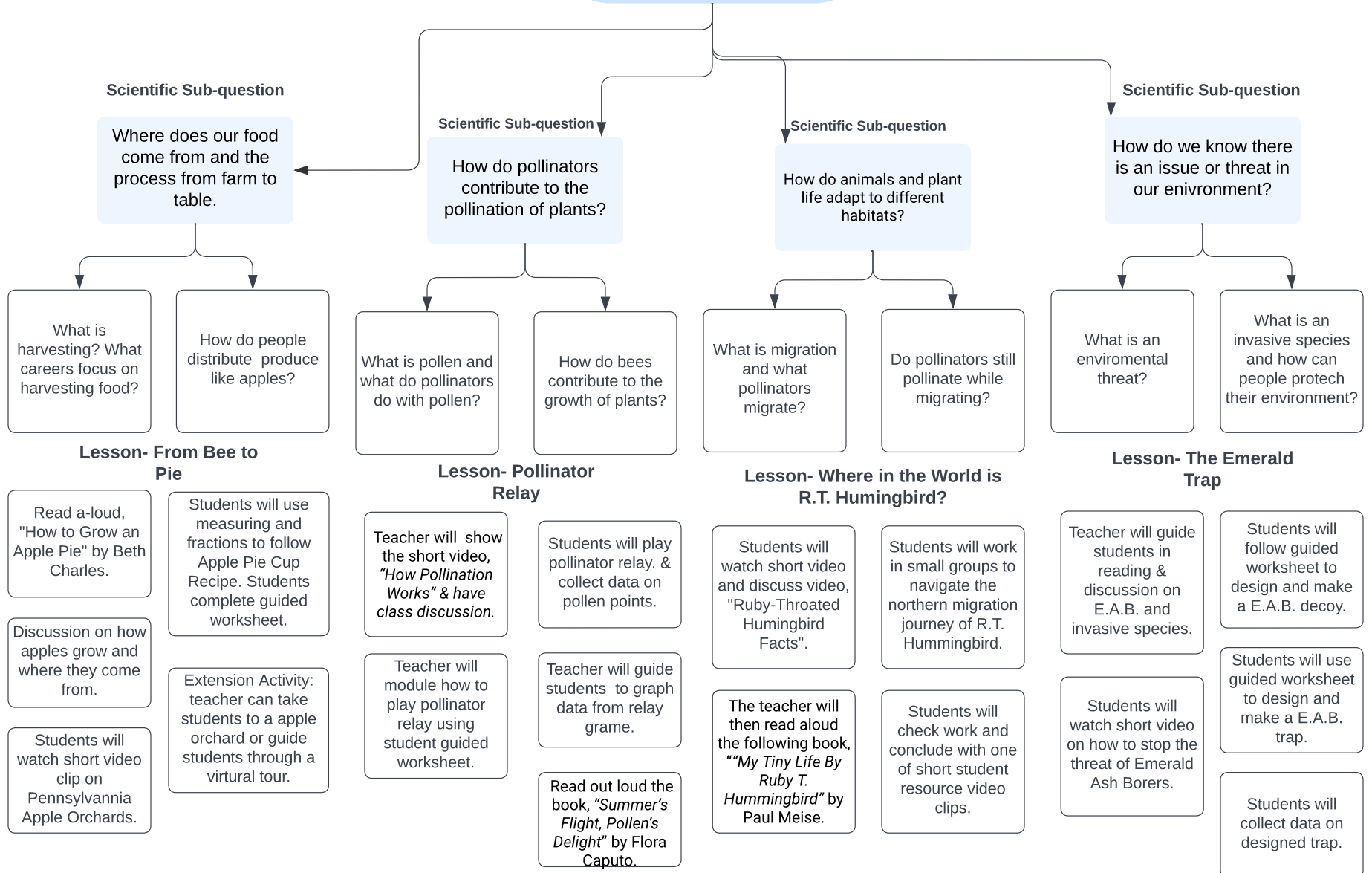


Second Grade MASTER Model AG-SEEDLINGS UNIT

Leading Scientific Question

How do humans, animals, and plants adapt to different environments?



Scientific Sub-question

Where does our food come from and the process from farm to table.

Scientific Sub-question
How do pollinators contribute to the pollination of plants?

Scientific Sub-question
How do animals and plant life adapt to different habitats?

Scientific Sub-question
How do we know there is an issue or threat in our environment?

What is harvesting? What careers focus on harvesting food?

How do people distribute produce like apples?

What is pollen and what do pollinators do with pollen?

How do bees contribute to the growth of plants?

What is migration and what pollinators migrate?

Do pollinators still pollinate while migrating?

What is an environmental threat?

What is an invasive species and how can people protect their environment?

Lesson- From Bee to Pie

Read a-loud, "How to Grow an Apple Pie" by Beth Charles.

Students will use measuring and fractions to follow Apple Pie Cup Recipe. Students complete guided worksheet.

Discussion on how apples grow and where they come from.

Students will watch short video clip on Pennsylvania Apple Orchards.

Extension Activity: teacher can take students to a apple orchard or guide students through a virtual tour.

Lesson- Pollinator Relay

Teacher will show the short video, "How Pollination Works" & have class discussion.

Students will play pollinator relay. & collect data on pollen points.

Teacher will module how to play pollinator relay using student guided worksheet.

Teacher will guide students to graph data from relay game.

Read out loud the book, "Summer's Flight, Pollen's Delight" by Flora Caputo.

Lesson- Where in the World is R.T. Hummingbird?

Students will watch short video and discuss video, "Ruby-Throated Hummingbird Facts".

Students will work in small groups to navigate the northern migration journey of R.T. Hummingbird.

The teacher will then read aloud the following book, "My Tiny Life By Ruby T. Hummingbird" by Paul Meise.

Students will check work and conclude with one of short student resource video clips.

Lesson- The Emerald Trap

Teacher will guide students in reading & discussion on E.A.B. and invasive species.

Students will follow guided worksheet to design and make a E.A.B. decoy.

Students will watch short video on how to stop the threat of Emerald Ash Borers.

Students will use guided worksheet to design and make a E.A.B. trap.

Students will collect data on designed trap.