



 Shepparton

292/65 Channel Road Shepparton

\$399,000 - \$410,000

 2  1  2  1  1

Modern, Bright and Roomy

This modern Genoa design offers a spacious rear living area with wood-look flooring throughout and built-in display cabinets. The modern kitchen features a step-in pantry, island bench and 5-burner gas cooktop, along with plenty of storage space. The laundry with a separate entry from the carport provides flexible access, and the side alfresco adds a further living space with shade blinds all around.

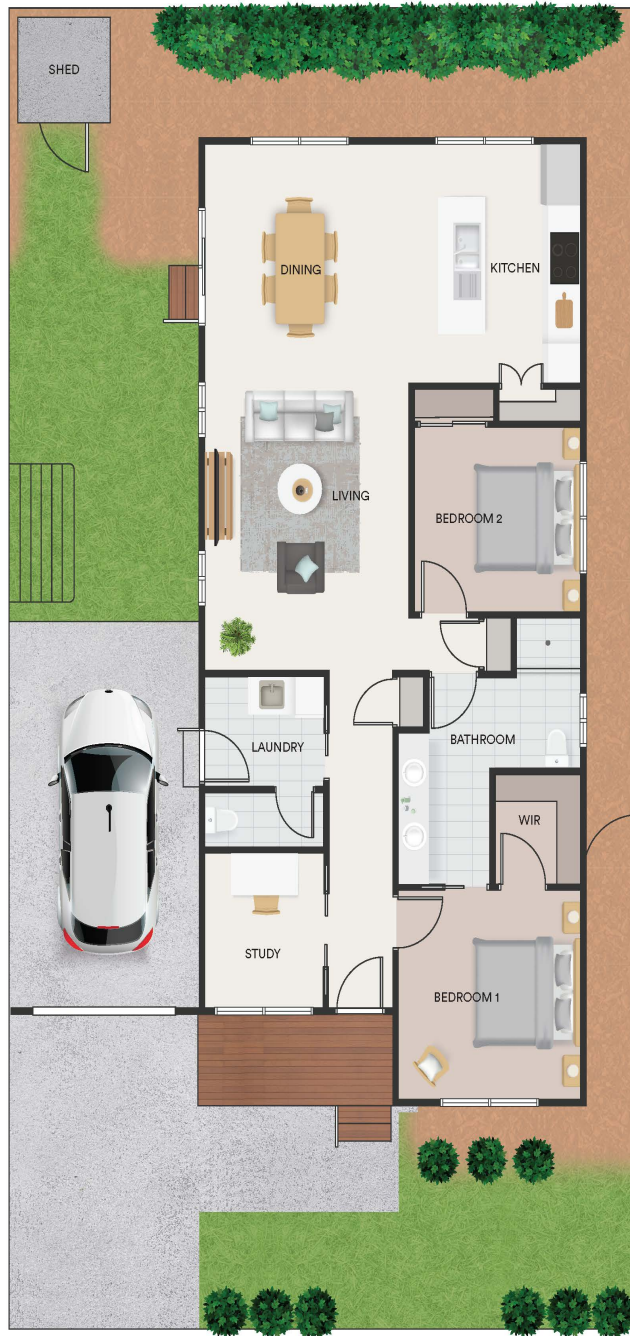
Other features include:

- 2kw solar power system
- Gas ducted heating
- Fans to Bedrooms and the lounge
- Tinted windows & front external blinds
- Quiet location close to the Pavilion

 1300 50 55 60

 lifestyle communities

Lifestyle
Communities®



1300 50 55 60

lifestyle communities

Lifestyle
Communities®