

Rubi

Open outlook

 2  1  2  1

Relish in the comforts of the Rubi

Offering two generous bedrooms, a walk-in pantry connected to an expansive kitchen, and a rear deck to sip your morning coffee, this home offers everything you need live your life to the fullest.



Façade: Birch | External colour: Serene



Façade: Wattle | External colour: Slate

To ensure that every home complements its surroundings, the exterior colours and façade of your home have been carefully pre-selected as part of the overall masterplan.

 1300 50 55 60

 lifestyle communities

Lifestyle
Communities®

Rubi

Open outlook

Floor plan area

130.60m² | 14.1sq

Carport

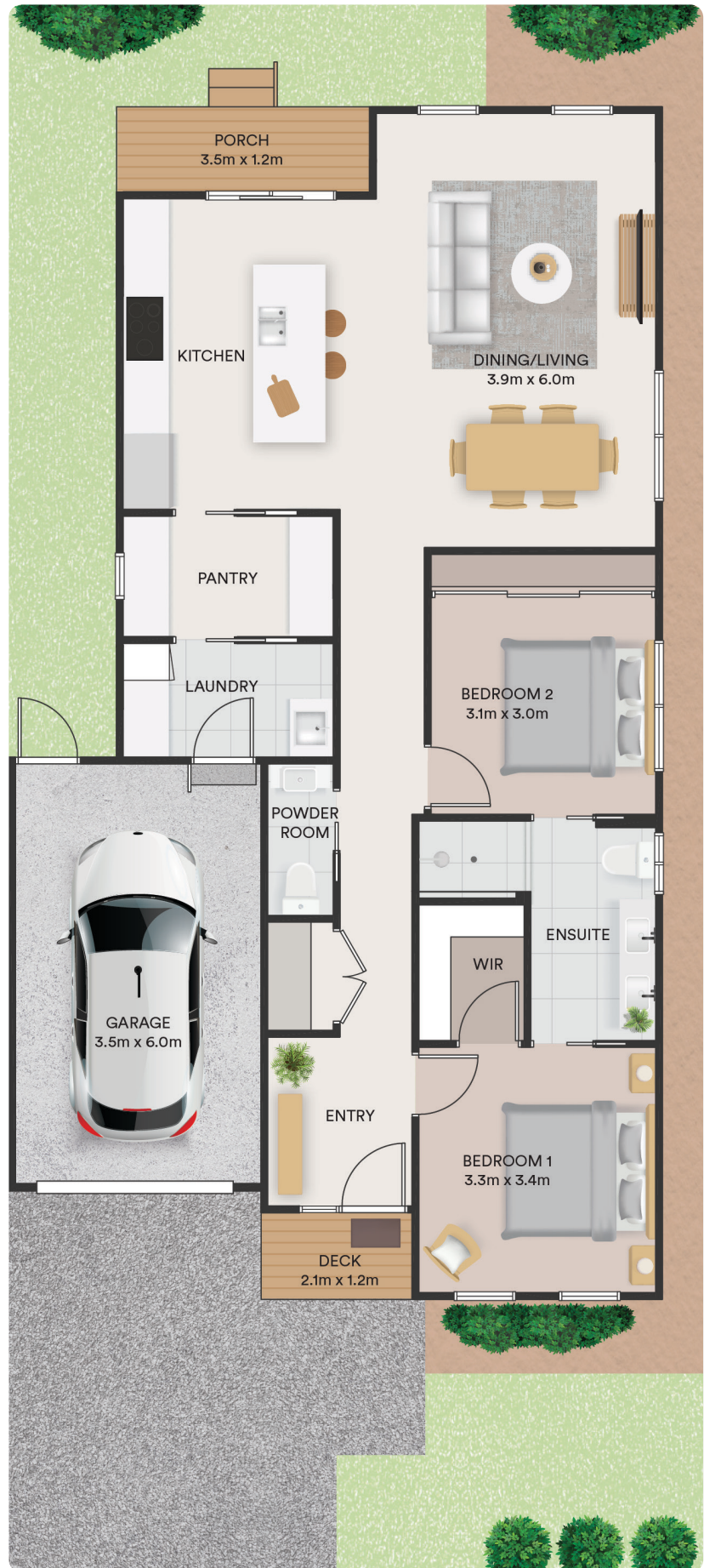
3.5m wide

Lot type

Open outlook Standard B Lot

Lot size

10m wide x 21m deep



Please note front deck sizes vary and are determined by façade type and selected lot. The rear carport door is only a standard inclusion when firewall is applicable to carport, therefore subject to lot. Photographs and illustrations are intended to be a visual aid only and may not accurately represent the actual home and should not be relied upon. Facade may change at each community. Drawings are not to scale and subject to change without notice. All details are correct at time of publication. Please refer to the applicable standard drawings for further details. E&OE. You must verify all home specifications and details prior to entering any contract for the purchase of a home. © 2026 Lifestyle Communities®

Updated: April 2026